

ZAXIS-5 series

**HITACHI**

Reliable Solutions

# ZAXIS 350

Hitachi Construction Machinery Group

**LANDCROS**

Japanese Excellence—Reliable Solutions



## HYDRAULIC EXCAVATOR

Model Code ZX350LC-5B / ZX350LCN-5B

Engine Rated Power 202 kW (270 HP)

Operating Weight ZX350LC-5B : 32 600 - 34 500 kg

ZX350LCN-5B : 34 000 - 35 100 kg

Backhoe Bucket ISO Heaped : 1.40 - 2.00 m<sup>3</sup>

# PRELIMINARY SPECIFICATIONS

## ENGINE

Model .....	Isuzu AL-6HK1X
Type .....	4-cycle water-cooled, common rail direct injection
Aspiration .....	Variable geometry turbocharged, intercooled, cooled EGR
Aftertreatment .....	Muffler filter
No. of cylinders .....	6
Rated power	
ISO 9249, net .....	202 kW (271 HP) at 1 900 min <sup>-1</sup> (rpm)
EEC 80/1269, net .....	202 kW (271 HP) at 1 900 min <sup>-1</sup> (rpm)
SAE J1349, net .....	202 kW (271 HP) at 1 900 min <sup>-1</sup> (rpm)
Maximum torque .....	1 080 Nm (110 kgfm) at 1 500 min <sup>-1</sup> (rpm)
Piston displacement .....	7.790 L
Bore and stroke .....	115 mm x 125 mm
Batteries .....	2 x 12 V / 128 Ah

## HYDRAULIC SYSTEM

### Hydraulic pumps

Main pumps .....	3 variable displacement axial piston pumps
Maximum oil flow .....	2 x 288 L/min
.....	1 x 260 L/min
Pilot pump .....	1 gear pump
Maximum oil flow .....	36.4 L/min

### Hydraulic Motors

Travel .....	2 variable displacement axial piston motors
Swing .....	1 swash plate piston motor

### Relief Valve Settings

Implement circuit .....	34.3 MPa (350 kgf/cm <sup>2</sup> )
Swing circuit .....	32.4 MPa (330 kgf/cm <sup>2</sup> )
Travel circuit .....	34.3 MPa (350 kgf/cm <sup>2</sup> )
Pilot circuit .....	3.9 MPa (40 kgf/cm <sup>2</sup> )
Power boost .....	38.0 MPa (388 kgf/cm <sup>2</sup> )

### Hydraulic Cylinders

	Quantity
Boom	2
Arm	1
Bucket	1
Positioning <sup>*1</sup>	1

\*1 : For 2-piece boom

## UPPERSTRUCTURE

### Revolving Frame

D-section frame for resistance to deformation.

### Swing Device

Axial piston motor with planetary reduction gear is bathed in oil. Swing circle is single-row. Swing parking brake is spring-set/hydraulic-released disc type.

Swing speed .....	9.7 min <sup>-1</sup> (rpm)
Swing torque .....	120 kNm (12 240 kgfm)

### Operator's Cab

Independent spacious cab, 1 005 mm wide by 1 675 mm high, conforming to ISO\* Standards.

\* International Organization for Standardization

## UNDERCARRIAGE

### Tracks

Heat-treated connecting pins with dirt seals. Hydraulic (grease) track adjusters with shock-absorbing recoil springs.

### Numbers of Rollers and Shoes on Each Side

Upper rollers .....	2
Lower rollers .....	8
Track shoes .....	48
Track guard .....	3

### Travel Device

Each track driven by 2-speed axial piston motor. Parking brake is spring-set/hydraulic-released disc type. Automatic transmission system: High-Low.

Travel speeds .....	High : 0 to 5.0 km/h
.....	Low : 0 to 3.2 km/h

Maximum traction force ... 298 kN (29 200 kgf)

Gradeability .....

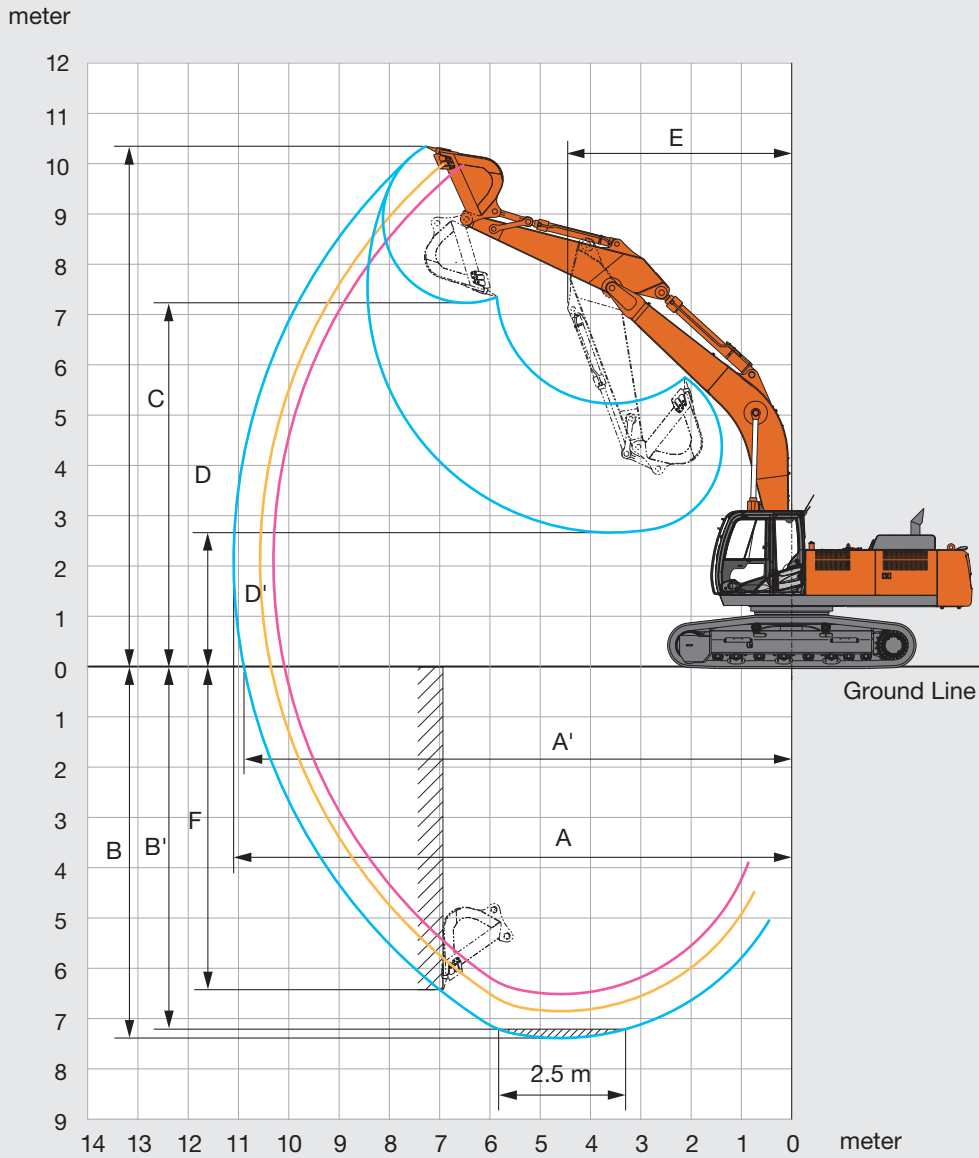
70% (35 degree) continuous

## SERVICE REFILL CAPACITIES

Fuel tank .....	630.0 L
Engine coolant .....	40.0 L
Engine oil .....	48.0 L
Swing device .....	15.7 L
Travel device (each side) .....	9.2 L
Hydraulic system .....	340.0 L
Hydraulic oil tank .....	180.0 L

# PRELIMINARY SPECIFICATIONS

## WORKING RANGES: MONOBLOCK BOOM



Unit: mm

	ZAXIS 350LC / ZAXIS 350LCN		
	6.40 m Monoblock boom		
Arm length	2.33 m	2.67 m	3.20 m
A Max. digging reach	10 310	10 570	11 100
A' Max. digging reach (on ground)	10 080	10 360	10 890
B Max. digging depth	6 500	6 840	7 380
B' Max. digging depth for 2.5 m level	6 300	6 640	7 210
C Max. cutting height	9 980	9 990	10 360
D Max. dumping height	6 900	6 940	7 240
D' Min. dumping height	3 580	3 210	2 680
E Min. swing radius	4 460	4 610	4 460
F Max. vertical wall digging depth	5 330	5 510	6 420

Excluding track shoe lug

Hitachi Construction Machinery Americas reserves the right to change specifications at any time without prior notification. © 2024 All Rights Reserved

# EQUIPMENT

● ..... Standard equipment ○ ..... Optional equipment

## ENGINE

Air cleaner double filters	●
Auto idle system	●
Auto shut-down control	●
Cartridge-type engine oil filter	●
Cold fuel resistance valve	○
Fuel pre-filter	●
Fuel main filter	●
Dust-proof indoor net	●
Dry-type air filter with evacuator valve (with air filter restriction indicator)	●
Electrical fuel feed pump	●
ECO/PWR mode control	●
Engine oil drain coupler	●
Engine warm-up device	●
Fan guard	●
Fuel cooler	●
High performance water separator	●
Isolation-mounted engine	●
Muffler filter	●
Pre-cleaner	○
Radiator, oil cooler and intercooler	●
Radiator reserve tank	●
50 A alternator	●

## HYDRAULIC SYSTEM

Auto power lift	●
Control valve with main relief valve	●
Full-flow filter	●
High mesh full flow filter with restriction indicator	○
Hose rupture valve for arm	○
Hose rupture valve for boom	●
Pilot filter	●
Power boost	●
Suction filter	●
Swing dampener valve	●
Two extra port for control valve	●
Variable reliefvalve for breaker & crusher	●
Work mode selector	●

## CAB

Auxiliary function lever (Breaker assist)	○
All-weather sound suppressed steel cab	●
AM-FM radio	●
Ashtray	●
Auto control air conditioner	●
AUX. terminal and storage	●
CRES V (Center pillar reinforced structure) cab	●
Drink holder with hot & cool function	●
Electric double horn	●
Engine shut-off switch	●
Equipped with reinforced, tinted (green color) glass windows	●
Evacuation hammer	●
Fire extinguisher bracket	○
Floor mat	●
Footrest	●
Front window washer	●
Windows on front, upper, lower and left side can be opened	●
Glove compartment	●
Hot & cool box	●
Intermittent windshield wipers	●
Key cylinder light	●
Laminated round glass window	○
LED room light with door courtesy	●
OPG front guard Level II (ISO10262) compliant cab	○
OPG top guard fitted Level II (ISO10262) compliant cab	○
Pilot control shut-off lever	●
Rain guard	○
Rear tray	●
Retractable seat belt	●
ROPS (ISO12117-2) compliant cab	●
Rubber radio antenna	●
Seat : air suspension seat with heater	●
Seat adjustment part : backrest, armrest, height and angle, slide forward / back	●
Short wrist control levers	●
Sun visor (front window/side window)	○
Transparent roof with slide curtain	●
2 speakers	●
4 fluid-filled elastic mounts	●
12 V power outlet	○
24 V cigarette lighter	●

## MONITOR SYSTEM

Alarm buzzers: overheat, engine oil pressure, overload	●
Alarms: overheat, engine warning, engine oil pressure, alternator, minimum fuel level, hydraulic filter restriction, air filter restriction, work mode, overload, etc	●
Display of meters: water temperature, hour, fuel rate, clock	●
Other displays: work mode, auto-idle, glow, rearview monitor, operating conditions, etc	●
32 languages selection	●

## LIGHTS

Additional cab roof front lights	○
Additional cab roof rear lights	○
Additional boom light with cover	○
Rotating lamp	○
2 working lights	●

## UPPER STRUCTURE

Electric fuel refilling pump with auto stop and filter	●
Fuel level float	●
Hydraulic oil level gauge	●
Rear view camera	●
Rear view mirror (right & left side)	●
Swing parking brake	●
Tool box	●
Undercover	●
Utility space	●
7 600 kg counterweight	●
2 x 128 Ah batteries	●

## UNDERCARRIAGE

Bolt-on sprocket	●
Reinforced track links with pin seals	●
Travel motor covers	●
Travel parking brake	●
Track undercover	○
Upper and lower rollers	●
3 track guards (each side) and hydraulic track adjuster	●
4 tie down hooks	●
800 mm triple grouser shoes	●

## FRONT ATTACHMENTS

Casted bucket link A	●
Centralized lubrication system	●
Dirt seal on all bucket pins	●
Flanged pin	●
HN bushing	●
Reinforced resin thrust plate	●
WC (tungsten-carbide) thermal spraying	●
Welded bucket link A with welded hook	○

## ATTACHMENTS

Attachment basic piping	●
Additional pump (30 L/min)	○
Breaker and crusher piping	●
HSB Parts for breaker and crusher	●
Pilot accumulator	○
Assist piping	○

## MISCELLANEOUS

Lockable fuel refilling cap	●
Lockable machine covers	●
Onboard information controller	●
Skid-resistant tapes, plates and handrails	●
Standard tool kit	●
Travel direction mark on track frame	●
Theft prevention system*	○
Global e-Service	●

Standard and optional equipment may vary by country, so please consult your authorized Hitachi dealer for details.

\* Hitachi Construction Machinery cannot be held liable for theft, any system will just minimize the risk of theft.