

# HITACHI

## CONSTRUCTION HYDRAULIC EXCAVATOR

ZX490-7G Series



Reliable Solutions



**Engine Rated Power :** 296 kW (397 HP)

**Operating Weight :** 46.500 – 49.000 kg

**Bucket Capacity :** 1,60 – 2,65 m<sup>3</sup>

**Model Code :** ZX490-7G | ZX490LC-7G

296 kW (397 HP)

47.000 – 48.600 kg

1,90 – 2,50 m<sup>3</sup>

ZX490H-7G | ZX490LCH-7G

# ZAXIS490



# GET MORE FROM YOUR MACHINE

You're at the heart of Hitachi Construction Machinery's design for its latest range of excavators. To continuously improve on previous generation machines, we've focused on enhancing your profit in business.

We have made cost reduction for our customers our top priority and, in doing so, have achieved reduced fuel consumption. The cab has been redesigned to improve the operator's working environment and controllability, with production also expected to improve. An engine that already has a proven track record of high reliability has been adopted, and we have placed further work in it to make it even more robust. Remote failure diagnosis, monitoring, and OTA (Over The Air - controller rewriting) are also supported to reduce downtime.



# INSIDE



4-5 | MORE PRODUCTION  
LOWER FUEL CONSUMPTION



6-7 | BETTER  
OPERABILITY



8-9 | HIGH DURABILITY  
AND RELIABILITY



10-11 | GREATER DURABILITY IN  
QUARRY SITES R-series



12-13 | SMOOTH  
MAINTENANCE

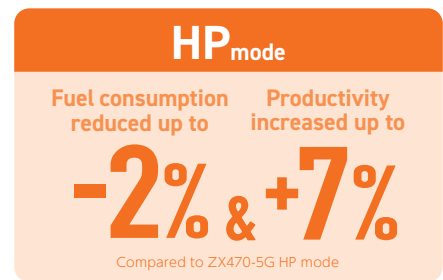
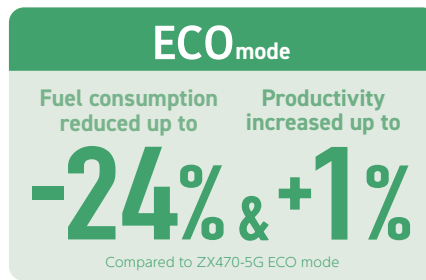
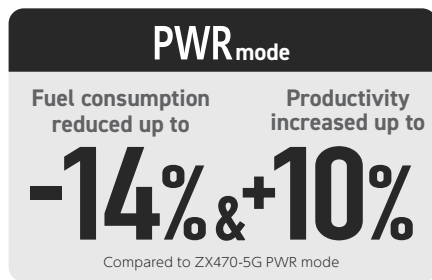


14-15 | MACHINE  
MANAGEMENT

# MORE PRODUCTION

# LOWER FUEL CONSUMPTION

The HIOS-V new Hydraulic system has achieved both increased productivity and reduced fuel consumption in each mode. The ZAXIS performance contributes to increase the returns to the customer.



## HIOS-V Hydraulic system

The hydraulic system developed was based on the concept of a hydraulic system that fits in-line with a sense of human operation.

- ✓ Efficient hydraulic control achieves smoother and more speedy movement of front attachments.
- ✓ Fine-tuned hydraulic pump control according to work load reduces fuel consumption and supports cost reductions.

## Reduced oil pressure loss

A new valve has been adopted to reduce hydraulic loss and further improve hydraulic efficiency.

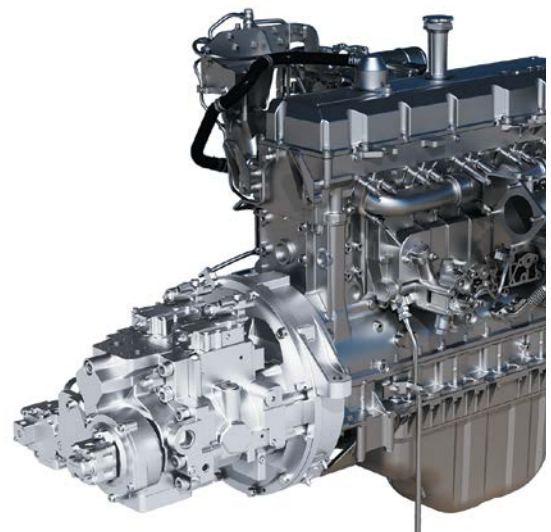
- ✓ Contributing to low fuel consumption operation

## High power engine

Rated power has been increased from the conventional ZX470-5G engine contributing to greater work volume.

- ✓ Increased workload

	ZX470-5G	ZX490-7G
Rated output (ISO 14396:2002)	<b>235kW</b>	<b>296kW</b>



## High efficiency operation support system

### ECO gauge

The current fuel consumption is indicated by segment display, prompting the operator to better fuel economy. The lower the fuel consumption, the higher the segment.

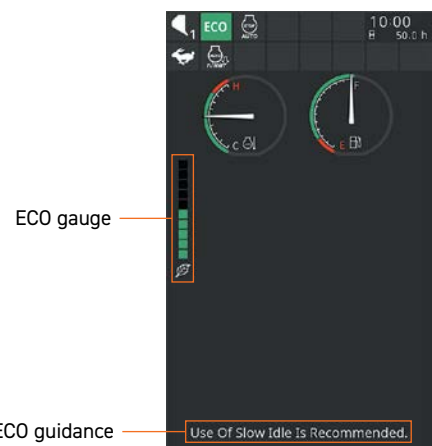
Easy to be removed and cleaned

### ECO guidance

Prompts the operator to better fuel economy.

Messages are also shown while the ECO gauge is displayed.

- ✓ Prompts operator for better economy





# BETTER OPERABILITY

In the cab of the ZAXIS-7G, enhanced comfort and safety features are at your fingertips, offering the power to perform greater productivity with ease as well as reduced fatigue.



Operation is easy with ergonomically designed controls and switches.



Low-reflective color 8" monitor, up to a 42% larger display compared to ZX-5G series. Easier to view and navigate. Bluetooth® and USB power supply available.



**New designed pilot shut-off lever**  
 The newly designed pilot shut-off lever allows easier locking and unlocking with wrist operation.



**AERIAL ANGLE (Optional)**  
 270° bird's eye-view camera system is available as an option.

# HIGH DURABILITY AND RELIABILITY

Completing a project on time and on budget depends on the ability of your construction equipment to perform all day, every day. That's why Hitachi Construction Machinery owners have profited from generations of reliable and durable machinery. Hitachi Construction Machinery is always conscious of improving long-term reliability in its machine development. High long-term reliability is good in not only performance all day, every day but also for resale value.

## H Boom

Complete joint penetration has been applied to areas where the load is focused, and durability and reliability have been further improved.



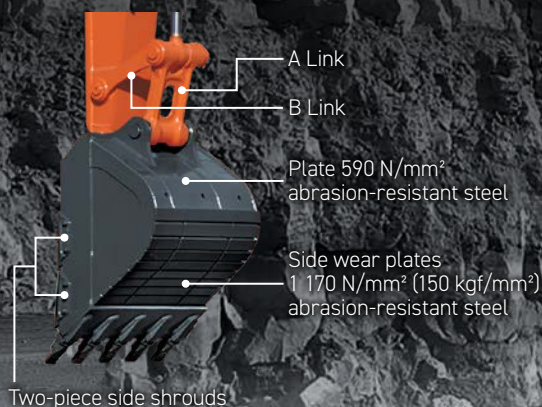
## H Arm

A forged boss is used in the arm rod. Complete joint penetration has been applied to areas where the load is focused, and durability and reliability have been further improved.



## Rock bucket (ZX490H-7G, ZX490LCH-7G only)

A rock bucket has been adopted in consideration for sites requiring heavier excavator work. Equipped with horizontal wear plates and two-piece side shrouds for increased durability.



## Undercarriage (ZX490H-7G, ZX490LCH-7G only)

**Full track guard**  
Protects the lower roller and link from boulders and extending the unit's operating life.





**Equipped with an Expansion tank**

✓ Improving the reliability of the engine cooling performance



**An engine with improved reliability**

The engine is a highly reliable model that has already been adopted previously. In adopting it for the ZX-7G, we have put in our efforts to further increase durability and to BOOST your uptime. EGR (Exhaust Gas Recirculation) is removed from the engine, increasing its durability for using low-quality fuel.



H-front attachment  
(Same as the standard model)



H/R Cab (ZX490H-7G, ZX490LCH-7G only)



A reinforced cab for H&R specification machines with a reinforced windshield and a FOPS\* guard that protects the cab from falling objects. The front has a laminated straight glass front window that shuts out dust. The cab front guard (optional), also complies with the ISO standard OPG\*\*. \*FOPS: Falling-Object Protective Structure \*\*OPG: Operator Protective Guards

Reinforced undercover  
(ZX490H-7G, ZX490LCH-7G only)

Laminated straight glass front window

# SMOOTH MAINTENANCE

Regular maintenance is essential for the machine to achieve high performance.

This excavator is designed for ease of regular maintenance. Simple and easy maintenance keeps the machine in good condition and keeps its high performance.



## Easy-access air conditioner condenser

- ✓ The cover can be opened without the need for any tools
- ✓ Easy to clean Radiator/Oil Cooler/Inter cooler core with simple air blowing



## Dust-proof net on right side cover

- ✓ Provided on the cover, in front of radiator core
- ✓ Easy cleaning with compressed air



## Simplified engine oil drainage

- ✓ Drain work can be done more easily by attaching a dedicated nozzle hose.



## Side walk (optional)

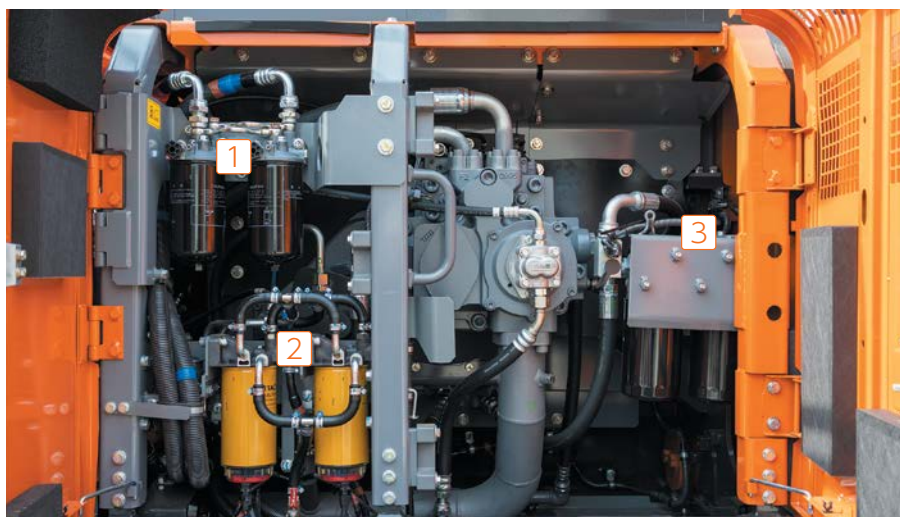
- ✓ Easy to move from cab to pump room or platform



### Easy access to filters

Filter locations are concentrated in the pump room

- 1 Fuel main filter
- 2 Fuel pre-filter with water separator
- 3 Engine oil filter



# MACHINE MANAGEMENT (Optional)

Hitachi Construction Machinery offers a wide range of after-sales services to help you feel in total control of your fleet and workload. These initiatives give you access to vital data and tools to manage your machine.



**ConSite**  
Consolidated Solution for Construction Sites



A wide range of data on Global e-Service enhances efficiency.

## Data report

Regular reports inform you of the machine's operation status. Emergency reports inform you of alarm information.

The stable operation of the machine is further supported with two types of reports visualizing the machine's daily operation status.

## Monthly report

Regular reports on the operating status of each machine.

## Alarm report

If an emergency alarm is generated from a sensor mounted on the machine, its alarm content is reported by e-mail in a timely manner. You can receive it on your computer, mobile phone, or smartphone (communication format is via e-mail).

movie for further info.





### ConSite Air

This is a service solution to diagnose machine status and update software from a remote location using OTA (Over The Air).

- Machine status, including error code display and sensor data, can be checked quickly, reducing downtime due to machine trouble.
- Software updates can be performed remotely, reducing the amount of machine downtime required.



Remote Diagnosis



Remote Software update

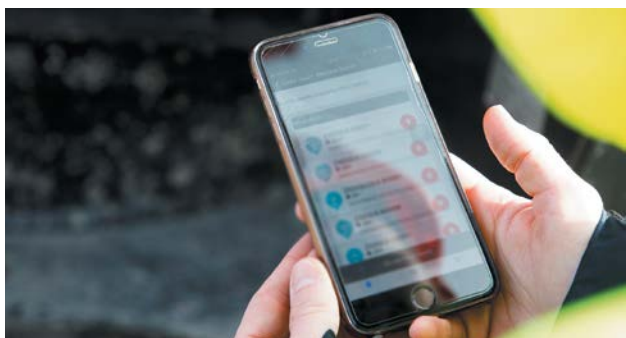
movie for further info.



### ConSite Pocket

ConSite Pocket sends you real-time alerts for issues arising with your machine. You'll receive recommendations on what to do and step-by-step help guides. The app also enables you to see the location of your fleet.

- Use your smartphone to check monthly reports, alarm reports, as well as machine operating positions.
- If an alarm report is generated, the system will notify you immediately using a push notification.



Monthly report



Machine finder



Location information

movie for further info.



### ConSite Shot

This is a smartphone application that allows you to easily perform daily inspections of your machines and rental warehousing / delivery management.

- You can easily create high-quality inspection reports and share information within your company or with agents etc.
- Customers who have rental machines can also use it during rental warehousing / delivery inspections.



Load condition



Acceptance or delivery inspection of rental machines



Inspection report with condition photo

movie for further info.



### ConSite OIL

This system detects if the oil quality has deteriorated, due to contamination or low viscosity. If this happens, you and your authorized dealer will receive an alert.

movie for further info.



# SPECIFICATIONS

ENGINE	
Model	Isuzu AE-6WG1XWSA
Type	4-cycle water-cooled, common rail direct injection
Aspiration	Variable geometry turbocharged, intercooled
No. of cylinders	6
Rated power	
ISO 14396 : 2002 gross	296 kW (397 HP) at 1.800 min <sup>-1</sup> (rpm)
ISO 9249 : 2007 net	295 kW (396 HP) at 1.800 min <sup>-1</sup> (rpm)
Maximum torque	1.932 Nm (197 kgfm) at 1.400 min <sup>-1</sup> (rpm)
Piston displacement	15,681 L
Bore and stroke	147 mm x 154 mm
Batteries	2 x 12 V

HYDRAULIC SYSTEM	
<b>Hydraulic Pumps</b>	
Main pumps	2 variable displacement axial piston pumps
Maximum oil flow	2 x 385 L/min
Pilot pump	1 gear pump
Maximum oil flow	30 L/min
<b>Hydraulic Motors</b>	
Travel	2 variable displacement axial piston motors
Swing	2 axial piston motor
<b>Relief Valve Settings</b>	
Implement circuit	31,9 MPa (325 kgf/cm <sup>2</sup> )
Swing circuit	28,4 MPa (290 kgf/cm <sup>2</sup> )
Travel circuit	35,3 MPa (360 kgf/cm <sup>2</sup> )
Pilot circuit	3,9 MPa (40 kgf/cm <sup>2</sup> )
Power boost	35,3 MPa (360 kgf/cm <sup>2</sup> )
<b>Hydraulic Cylinders</b>	
	Quantity
Boom	2
Arm	1
Bucket	1

UPPERSTRUCTURE	
<b>Revolving Frame</b>	
D-section frame for resistance to deformation.	
<b>Swing Device</b>	
Axial piston motor with planetary reduction gear is bathed in oil. Swing circle is single-row. Swing parking brake is spring-set/hydraulicreleased disc type.	
Swing speed	9,6 min <sup>-1</sup> (rpm)
Swing torque	148 kNm (15.100 kgfm)

UNDERCARRIAGE	
<b>Tracks</b>	
Heat-treated connecting pins with dirt seals. Hydraulic (grease) track adjusters with shock-absorbing recoil springs.	
<b>Numbers of Rollers and Shoes on Each Side</b>	
Upper rollers	2
Lower rollers	8 : ZX490-7G / ZX490H-7G
	9 : ZX490LC-7G / ZX490LCH-7G
Track shoes	49 : ZX490-7G / ZX490H-7G
	53 : ZX490LC-7G / ZX490LCH-7G
Track guards	1 : ZX490-7G
	2 : ZX490LC-7G
	Full track guard : ZX490H-7G / ZX490LCH-7G
<b>Travel Device</b>	
Each track driven by axial piston motor through reduction gear for counterrotation of the tracks. Parking brake is spring-set/hydraulic-released disc type. Automatic transmission system: High-Low.	
Travel speeds	High : 0 to 5,6 km/h
	Low : 0 to 3,8 km/h
Maximum traction force	329 kN (33.600 kgf)
Gradeability	70 % (35°) continuous

SERVICE REFILL CAPACITIES	
Fuel tank	675,0 L
Engine coolant	75,0 L
Engine oil	52,0 L
Swing device (each)	6,5 L
Travel device (each side)	11,0 L
Hydraulic system	510,0 L
Hydraulic oil tank	290,0 L

## WEIGHTS AND GROUND PRESSURE

## Operating Weight and Ground Pressure

## ZX490-7G

Shoe grouser type	Shoe width	Arm type	Boom type	Operating weight	Ground pressure	
	mm			kg	kPa	kgf/cm <sup>2</sup>
Triple or double	600	2,5 m BE	6,3 m BE	47.000	80	0,82
		3,4 m H	7,0 m H	46.500	79	0,81
Triple	750	2,5 m BE	6,3 m BE	47.700	65	0,66
		3,4 m H	7,0 m H	47.200	64	0,65

## ZX490LC-7G

Shoe grouser type	Shoe width	Arm type	Boom type	Operating weight	Ground pressure	
	mm			kg	kPa	kgf/cm <sup>2</sup>
Triple or double	600	2,5 m BE	6,3 m BE	48.300	82	0,84
		3,4 m H	7,0 m H	47.800	81	0,83
Triple	750	2,5 m BE	6,3 m BE	49.000	66	0,67
		3,4 m H	7,0 m H	48.500	66	0,67

## ZX490H-7G

Shoe grouser type	Shoe width	Arm type	Boom type	Operating weight	Ground pressure	
	mm			kg	kPa	kgf/cm <sup>2</sup>
Triple or double	600	3,4 m H	7,0 m H	47.000	80	0,82

## ZX490LCH-7G

Shoe grouser type	Shoe width	Arm type	Boom type	Operating weight	Ground pressure	
	mm			kg	kPa	kgf/cm <sup>2</sup>
Triple or double	600	2,5 m BE	6,3 m BE	48.600	82	0,84
		3,4 m H	7,0 m H	48.200	82	0,84

# SPECIFICATIONS

## BUCKET AND ARM DIGGING FORCE

### ZX490-7G / ZX490LC-7G

Boom length	6,3 m BE				7,0 m H			
Arm length	2,5 m BE		2,9 m BE		2,9 m BE		3,4 m H	
	kN	kgf	kN	kgf	kN	kgf	kN	kgf
Bucket digging force ISO 6015 : 2006	285	29.130	285	29.130	285	29.130	286	29.230
Arm crowd force ISO 6015 : 2006	294	30.050	256	26.140	259	26.450	222	22.640

At power boost

### ZX490H-7G / ZX490LCH-7G

Boom length	6,3 m BE				7,0 m H			
Arm length	2,5 m BE		2,9 m BE		2,9 m BE		3,4 m H	
	kN	kgf	kN	kgf	kN	kgf	kN	kgf
Bucket digging force ISO 6015 : 2006	295	30.150	295	30.150	295	30.150	296	30.260
Arm crowd force ISO 6015 : 2006	302	30.770	263	26.860	263	26.860	224	22.850

At power boost

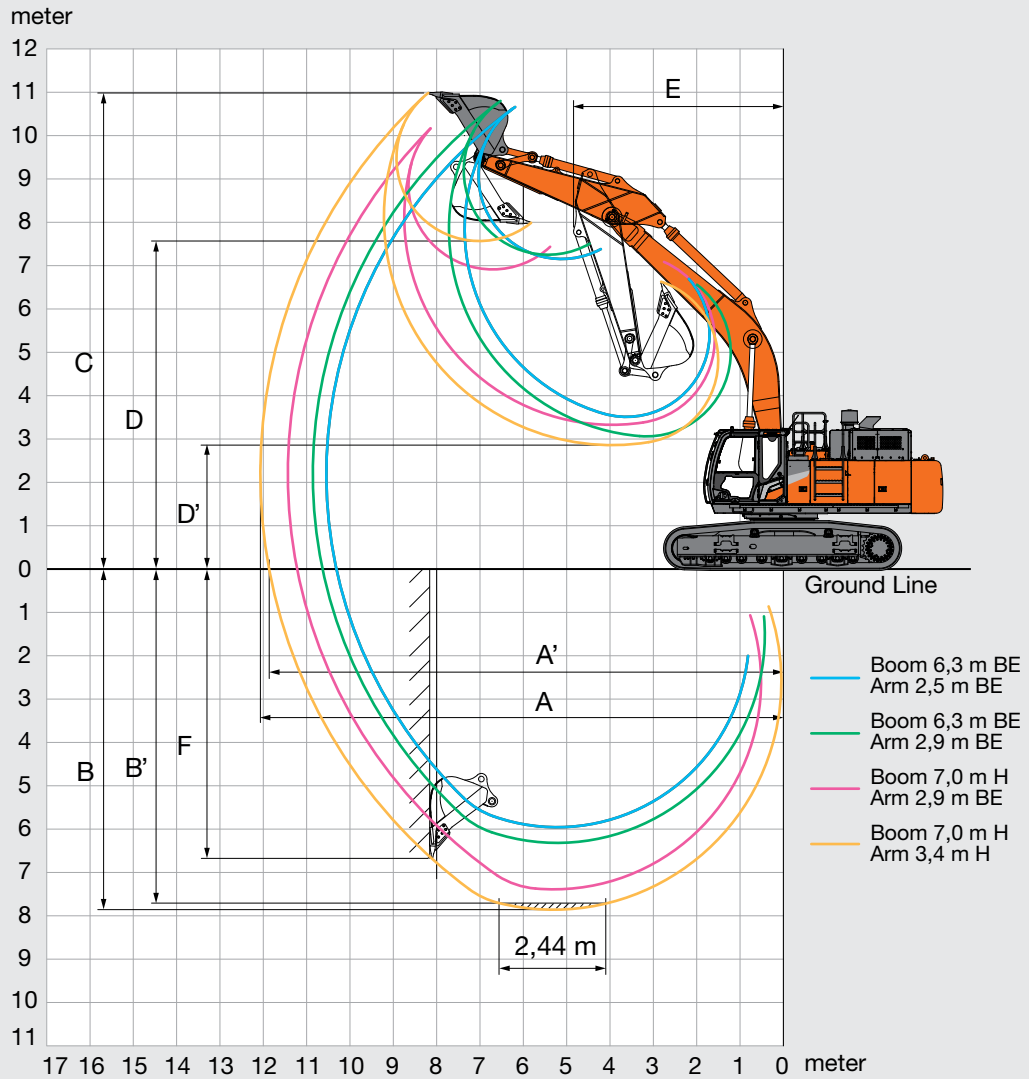




# SPECIFICATIONS

ZX490-7G / ZX490LC-7G

## WORKING RANGES



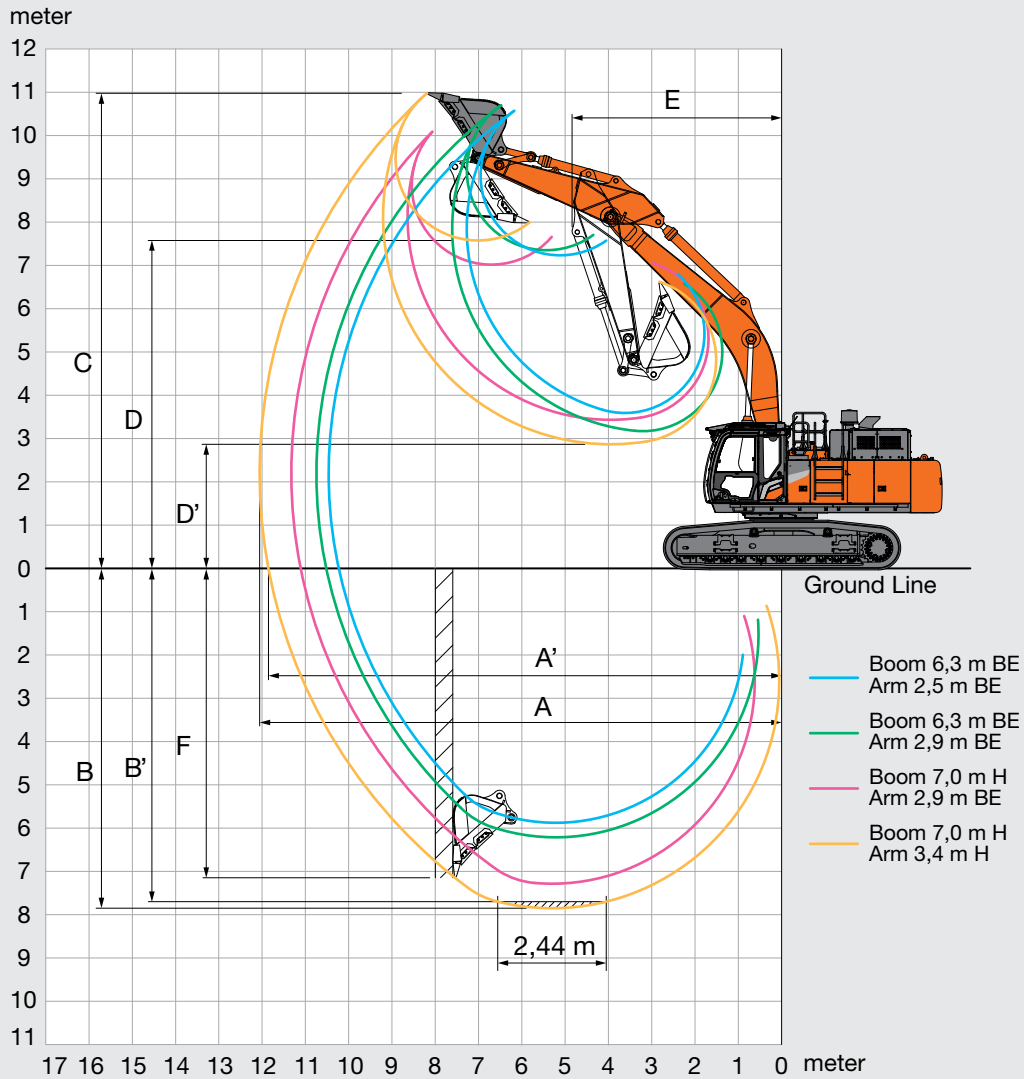
Unit: mm

ZX490-7G / ZX490LC-7G				
Boom	6,3 m BE		7,0 m H	
Arm length	2,5 m BE	2,9 m BE	2,9 m BE	3,4 m H
A Max. digging reach	10.460 / 10.550	10.850 / 10.750	11.400 / 11.400	12.060 / 12.060
A' Max. digging reach (on ground)	10.240 / 10.320	10.640 / 10.520	11.200 / 11.220	11.860 / 11.860
B Max. digging depth	5.920 / 5.960	6.360 / 6.210	7.400 / 7.360	7.890 / 7.850
B' Max. digging depth for 2,44 m level	5.740 / 5.780	6.200 / 6.050	7.200 / 7.160	7.750 / 7.710
C Max. cutting height	10.530 / 10.660	10.760 / 10.710	10.130 / 10.170	10.920 / 10.960
D Max. dumping height	7.190 / 7.160	7.210 / 7.360	6.900 / 6.910	7.530 / 7.570
D' Min. dumping height	3.550 / 3.510	3.030 / 3.170	3.320 / 3.330	2.820 / 2.860
E Min. swing radius	3.930 / 3.930	3.920 / 3.920	5.020 / 5.020	4.840 / 4.840
F Max. vertical wall digging depth	4 380 / 4 230	5 150 / 4 740	5 390 / 4 780	6 710 / 6 670

Excluding track shoe lug

Hitachi Construction Machinery Americas reserves the right to change specifications at any time without prior notification. © 2024 All Rights Reserved

WORKING RANGES



Unit: mm

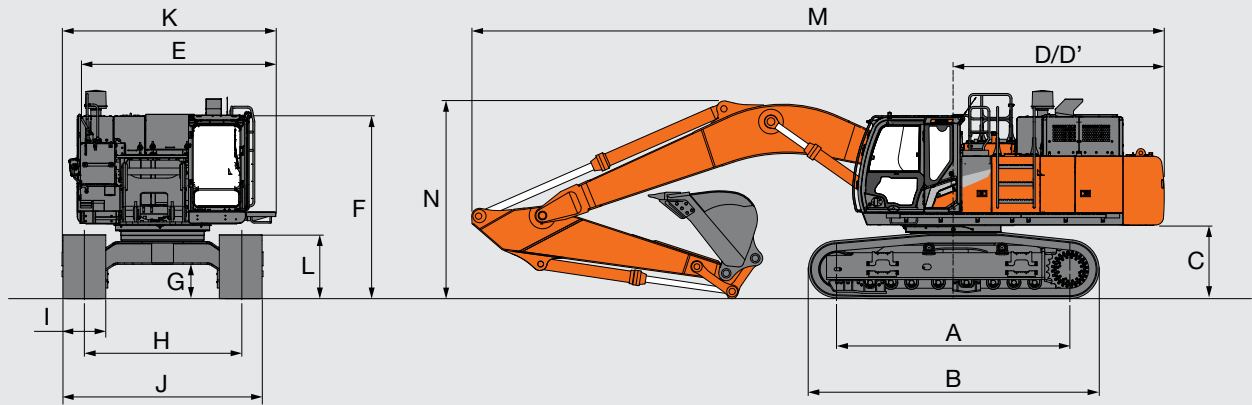
Boom	ZX490H-7G		ZX490LCH-7G			
	7,0 m H		6,3 m BE		7,0 m H	
Arm length	2,9 m BE	3,4 m H	2,5 m BE	2,9 m BE	2,9 m BE	3,4 m H
A Max. digging reach	11.330	12.060	10.460	10.750	11.330	12.060
A' Max. digging reach (on ground)	11.120	11.860	10.230	10.630	11.110	11.860
B Max. digging depth	7.330	7.900	5.880	6.220	7.290	7.860
B' Max. digging depth for 2,44 m level	7.130	7.760	5.710	6.060	7.090	7.720
C Max. cutting height	10.040	10.920	10.570	10.700	10.080	10.980
D Max. dumping height	6.970	7.520	7.230	7.350	7.010	7.560
D' Min. dumping height	3.390	2.810	3.580	3.160	3.430	2.850
E Min. swing radius	5.020	4.840	4.090	3.930	5.020	4.840
F Max. vertical wall digging depth	4.400	7.230	4.350	4.740	4.360	7.190

Excluding track shoe lug

# SPECIFICATIONS

ZX490-7G / ZX490LC-7G / ZX490H-7G / ZX490LCH-7G

## DIMENSIONS



Unit: mm

	ZX490-7G	ZX490LC-7G	ZX490H-7G	ZX490LCH-7G
A Distance between tumblers	4.040	4.470	4.040	4.470
B Undercarriage length	5.040	5.470	5.040	5.470
*1 C Counterweight clearance	1.230	1.270	1.230	1.270
D Rear-end swing radius	3.670	3.670	3.670	3.670
D' Rear-end length	3.660	3.660	3.660	3.660
E Overall width of upperstructure	2.990	2.990	2.990	2.990
F Overall height of cab	3.320	3.360	3.320	3.360
*1 G Min. ground clearance	495	535	495	535
H Track gauge	2.740	2.740	2.740	2.740
I Track shoe width	600 / 750	600 / 750	600	600
J Undercarriage width				
with 600 mm shoe	3.340	3.340	3.340	3.340
with 750 mm shoe	3.490	3.490	-	-
K Overall width	3.820	3.820	3.820	3.820
*1 L Track height with triple grouser shoes	1.150	1.150	1.150	1.150
*2 M Overall length	12.040	12.040	12.040	12.040
*2 N Overall height of boom	3.410	3.450	3.410	3.450

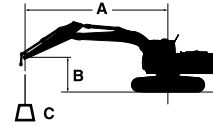
\*1 Excluding track shoe lug

\*2 with Boom 7,0 m and Arm 3,4 m



# MACHINE CAPACITIES

- Notes: 1. Ratings are based on ISO 10567 : 2007.  
 2. Machine capacity does not exceed 75% of tipping load with the machine on firm, level ground or 87% full hydraulic capacity.  
 3. The load point is the center-line of the bucket pivot mounting pin on the arm.  
 4. \*Indicates load limited by hydraulic capacity.  
 5. 0 m = Ground.  
 6. Machine specifications are determined excluding the bucket.



A: Load radius  
 B: Load point height  
 C: Machine capacity

For machine capacities, subtract installed attachment and quick hitch weight from machine capacities.

To determine lifting capacities, apply "Rating over-side or 360 degrees" machine capacities from the table and deduct weight of installed attachment and quick hitch. Optional feature may affect machine performance.

## ZX490-7G

Rating over-front Rating over-side or 360 degrees Unit : kg

Conditions	Load point height m	Load radius										At max. reach		
		3,0 m		4,5 m		6,0 m		7,5 m		9,0 m				meter
Boom 7,0 m H Arm 3,4 m H Counterweight 9.080 kg Shoe 600 mm	7,5							*11.550	*10.090			*7.710	*7.710	8,6
	6,0							*12.120	9.840	*10.580	7.250	*7.570	6.710	9,4
	4,5			*20.300	*20.300	*15.560	13.250	*13.150	9.440	10.410	7.070	*7.660	6.030	9,9
	3,0			*23.860	18.540	*17.760	12.360	13.420	8.970	10.150	6.830	*7.960	5.660	10,1
	1,5			*15.450	*15.450	18.150	11.640	12.960	8.560	9.900	6.600	8.280	5.520	10,1
	0 (Ground)			*18.020	16.970	17.670	11.220	12.640	8.260	9.710	6.430	8.450	5.610	9,9
	-1,5	*12.850	*12.850	*24.770	16.940	17.480	11.050	12.480	8.120	9.640	6.360	9.000	5.960	9,5
	-3,0	*21.230	*21.230	*23.750	17.130	17.530	11.100	12.510	8.150			10.150	6.700	8,7
-4,5	*25.030	*25.030	*19.990	17.530	*15.800	11.350	*11.890	8.400			*11.490	8.240	7,6	

## ZX490LC-7G

Rating over-front Rating over-side or 360 degrees Unit : kg

Conditions	Load point height m	Load radius										At max. reach		
		3,0 m		4,5 m		6,0 m		7,5 m		9,0 m				meter
Boom 7,0 m H Arm 3,4 m H Counterweight 9.080 kg Shoe 600 mm	7,5							*12.750	*10.810			*7.690	*7.690	8,7
	6,0							*13.740	10.530	*10.880	7.800	*7.560	*7.160	9,4
	4,5			*23.220	*21.780	*17.710	14.120	*14.930	10.100	*12.680	7.610	*7.670	6.480	9,9
	3,0			*23.700	19.750	*20.170	13.210	*16.250	9.620	*12.400	7.350	*7.990	6.110	10,1
	1,5			*15.420	*15.420	*22.000	12.490	*15.960	9.200	12.140	7.120	*8.560	5.990	10,1
	0 (Ground)			*18.460	*18.260	*22.130	12.070	*15.630	8.910	11.950	6.950	*9.470	6.100	9,9
	-1,5	*13.520	*13.520	*25.480	18.250	*21.950	11.920	*15.480	8.780	11.880	6.890	*10.950	6.500	9,4
	-3,0	*21.970	*21.970	*26.520	18.460	*20.770	11.990	*15.520	8.820			*12.670	7.350	8,7
-4,5	*27.720	*27.720	*22.170	*18.900	*17.540	12.270	*13.050	9.110			*12.990	9.090	7,5	
Boom 7,0 m H Arm 2,9 m BE Counterweight 9.080 kg Shoe 600 mm	7,5													
	6,0					*16.360	*14.700	*14.450	10.370			*11.040	8.100	8,7
	4,5			*25.060	*21.020	*18.610	13.830	*15.530	9.950	*12.570	7.510	*11.440	7.210	9,2
	3,0					*20.880	12.930	*16.300	9.490	*12.320	7.280	11.410	6.750	9,5
	1,5					*22.370	12.290	*15.850	9.100	12.090	7.080	11.240	6.590	9,5
	0 (Ground)			*19.900	18.150	*22.000	11.960	*15.570	8.860	11.950	6.950	11.570	6.740	9,2
	-1,5	*16.250	*16.250	*27.920	18.260	*21.910	11.900	*15.480	8.780			*12.530	7.260	8,7
	-3,0	*27.520	*27.520	*24.860	18.550	*19.880	12.040	*15.620	8.900			*14.610	8.390	7,9
-4,5			*19.900	*19.080	*15.850	12.440					*14.090	10.970	6,6	
Boom 6,3 m BE Arm 2,9 m BE Counterweight 9.080 kg Shoe 600 mm	7,5					*15.550	*15.410					*7.980	*7.980	7,2
	6,0					*16.690	*15.010	*13.860	10.470			*7.750	*7.750	8,1
	4,5			*23.710	*22.240	*18.650	14.300	*16.080	10.170			*7.850	*7.850	8,6
	3,0			*28.490	20.380	*20.890	13.490	*16.630	9.780			*8.230	7.570	8,9
	1,5			*31.090	19.200	*22.560	12.820	*16.210	9.410			*8.950	7.410	8,9
	0 (Ground)			*31.040	18.780	*22.570	12.430	*15.940	9.180			*10.170	7.630	8,6
	-1,5	*24.340	*24.340	*29.140	18.780	*22.270	12.320	*15.880	9.120			*12.350	8.330	8,1
	-3,0	*32.270	*32.270	*25.320	19.080	*19.570	12.490					*15.420	9.910	7,2
-4,5														
Boom 6,3 m BE Arm 2,5 m BE Counterweight 9.080 kg Shoe 600 mm	7,5					*16.450	*15.160					*12.280	*12.120	6,8
	6,0					*17.300	*14.760	*15.800	10.270			*11.880	9.670	7,8
	4,5			*24.720	*21.690	*19.160	14.030	*16.430	9.990			*12.010	8.440	8,3
	3,0					*21.230	13.220	*16.450	9.610			*12.600	7.840	8,6
	1,5					*22.670	12.590	*16.060	9.270			13.100	7.670	8,6
	0 (Ground)			*30.440	18.560	*22.380	12.260	*15.830	9.070			13.630	7.930	8,3
	-1,5			*28.100	18.660	*21.720	12.210	*15.840	9.080			*15.150	8.740	7,7
	-3,0			*23.810	19.030	*18.460	12.470					*15.440	10.620	6,8
-4,5														

ZX490H-7G

Rating over-front Rating over-side or 360 degrees Unit : kg

Conditions	Load point height m	Load radius										At max. reach		
		3,0 m		4,5 m		6,0 m		7,5 m		9,0 m				meter
Boom 7,0 m H Arm 3,4 m H Counterweight 9.080 kg Shoe 600 mm	7,5							*11.550	10.220			*7.710	*7.710	8,6
	6,0							*12.120	9.970	*10.580	7.350	*7.570	6.810	9,4
	4,5			*20.300	*20.300	*15.560	13.420	*13.150	9.570	10.560	7.170	*7.650	6.120	9,9
	3,0			*24.860	18.800	*17.760	12.530	13.610	9.100	10.300	6.930	*7.960	5.750	10,1
	1,5			*15.450	*15.450	18.420	11.820	13.160	8.690	10.050	6.700	8.410	5.610	10,1
	0 (Ground)			*18.020	17.230	17.930	11.390	12.830	8.390	9.860	6.530	8.590	5.700	9,9
	-1,5	*12.850	*12.850	*24.770	17.200	17.740	11.230	12.680	8.250	9.790	6.460	9.140	6.060	9,5
	-3,0	*21.230	*21.230	*23.750	17.390	17.790	11.270	12.700	8.280			10.300	6.810	8,7
-4,5	*25.030	*25.030	*19.990	*17.790	*15.800	11.530	*11.890	8.530			*11.490	8.360	7,6	

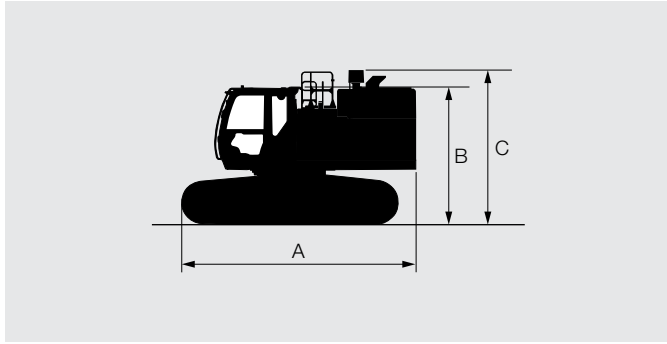
ZX490LCH-7G

Rating over-front Rating over-side or 360 degrees Unit : kg

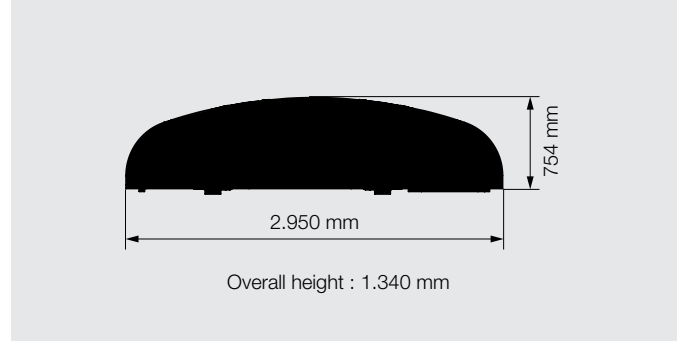
Conditions	Load point height m	Load radius										At max. reach		
		3,0 m		4,5 m		6,0 m		7,5 m		9,0 m				meter
Boom 7,0 m H Arm 3,4 m H Counterweight 9.080 kg Shoe 600 mm	7,5							*12.750	*10.810			*7.690	*7.690	8,7
	6,0							*13.740	10.530	*10.880	7.800	*7.560	*7.160	9,4
	4,5			*23.220	*21.780	*17.710	14.120	*14.930	10.100	*12.680	7.610	*7.670	6.480	9,9
	3,0			*23.700	19.750	*20.170	13.210	*16.250	9.620	*12.400	7.350	*7.990	6.110	10,1
	1,5			*15.420	*15.420	*22.000	12.490	*15.960	9.200	12.140	7.120	*8.560	5.990	10,1
	0 (Ground)			*18.460	*18.260	*22.130	12.070	*15.630	8.910	11.950	6.950	*9.470	6.100	9,9
	-1,5	*13.520	*13.520	*25.480	18.250	*21.950	11.920	*15.480	8.780	11.880	6.890	*10.950	6.500	9,4
	-3,0	*21.970	*21.970	*26.520	18.460	*20.770	11.990	*15.520	8.820			*12.670	7.350	8,7
-4,5	*27.720	*27.720	*22.170	*18.900	*17.540	12.270	*13.050	9.110			*12.990	9.090	7,5	
Boom 7,0 m H Arm 2,9 m BE Counterweight 9.080 kg Shoe 600 mm	7,5													
	6,0					*16.360	*14.700	*14.450	10.370			*11.040	8.100	8,7
	4,5			*25.060	*21.020	*18.610	13.830	*15.530	9.950	*12.570	7.510	*11.440	7.210	9,2
	3,0					*20.880	12.930	*16.300	9.490	*12.320	7.280	11.410	6.750	9,5
	1,5					*22.370	12.290	*15.850	9.100	12.090	7.080	11.240	6.590	9,5
	0 (Ground)			*19.900	18.150	*22.000	11.960	*15.570	8.860	11.950	6.950	11.570	6.740	9,2
	-1,5	*16.250	*16.250	*27.920	18.260	*21.910	11.900	*15.480	8.780			*12.530	7.260	8,7
	-3,0	*27.520	*27.520	*24.860	18.550	*19.880	12.040	*15.620	8.900			*14.610	8.390	7,9
-4,5			*19.900	*19.080	*15.850	12.440					*14.090	10.970	6,6	
Boom 6,3 m BE Arm 2,5 m BE Counterweight 9.080 kg Shoe 600 mm	7,5					*16.450	*15.160					*12.280	*12.120	6,8
	6,0					*17.300	*14.760	*15.800	10.270			*11.880	9.670	7,8
	4,5			*24.720	*21.690	*19.160	14.030	*16.430	9.990			*12.010	8.440	8,3
	3,0					*21.230	13.220	*16.450	9.610			*12.600	7.840	8,6
	1,5					*22.670	12.590	*16.060	9.270			13.100	7.670	8,6
	0 (Ground)			*30.440	18.560	*22.380	12.260	*15.830	9.070			13.630	7.930	8,3
	-1,5			*28.100	18.660	*21.720	12.210	*15.840	9.080			*15.150	8.740	7,7
	-3,0			*23.810	19.030	*18.460	12.470					*15.440	10.620	6,8
-4,5														

# TRANSPORTATION

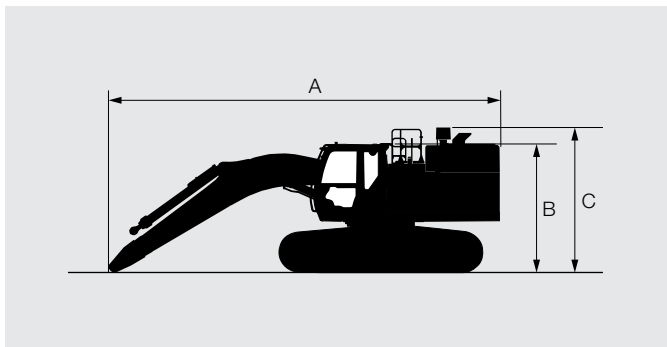
BASIC MACHINE (WITHOUT COUNTERWEIGHT)



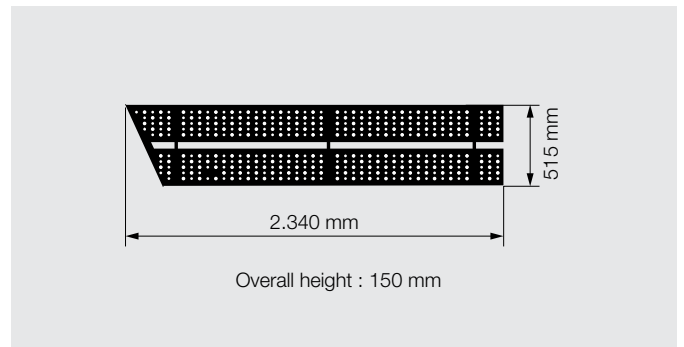
COUNTERWEIGHT 9.080 kg



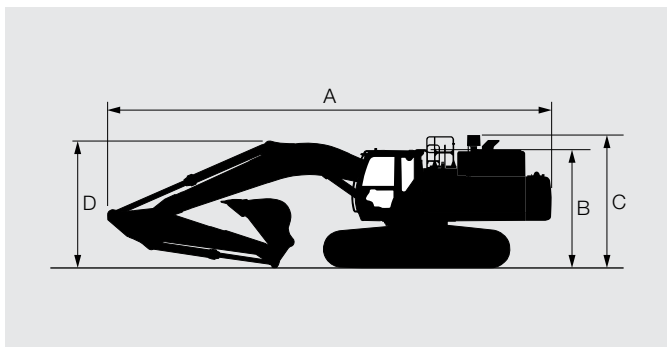
BASIC MACHINE FITTED WITH BOOM



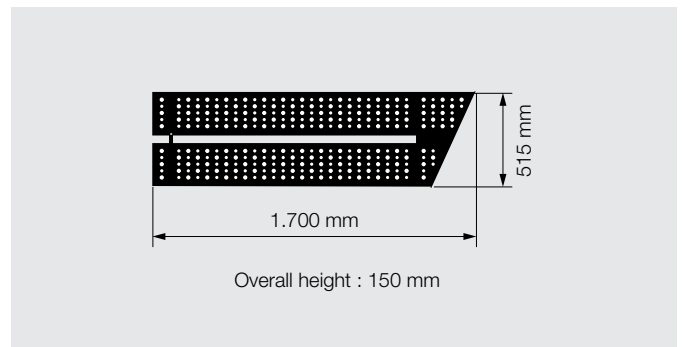
LIFT FRONT SIDEWALK 44 kg



BASIC MACHINE FITTED WITH FRONT AND COUNTERWEIGHT



LEFT REAR SIDEWALK 30 kg





**BASIC MACHINE (WITHOUT FRONT AND COUNTERWEIGHT)**

Fixed gauge	Shoe width (mm)	A (mm)	B (mm)	C (mm)	Overall width (mm)	Weight (kg)
ZX490-7G	600	5.470	3.175	3.540	3.340	27.900
	750	5.470	3.175	3.540	3.490	28.700
ZX490LC-7G	600	5.690	3.240	3.580	3.340	29.100
	750	5.690	3.240	3.580	3.490	29.900
ZX490H-7G	600	5.470	3.320	3.540	3.340	28.500
ZX490LCH-7G	600	5.690	3.360	3.580	3.340	29.700

**BASIC MACHINE FITTED WITH BOOM**

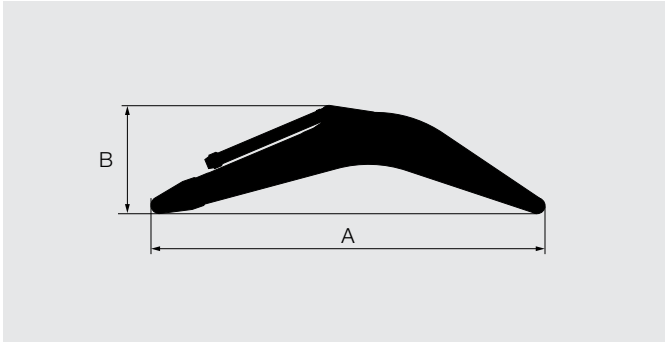
Fixed gauge	Boom length	Shoe width (mm)	A (mm)	B (mm)	C (mm)	Overall width (mm)	Weight (kg)
ZX490-7G	6,3 m BE	600	9.170	3.175	3.540	3.340	33.300
		750	9.170	3.175	3.540	3.490	34.000
	7,0 m H	600	9.950	3.175	3.540	3.340	33.300
		750	9.950	3.175	3.540	3.490	34.000
ZX490LC-7G	6,3 m BE	600	9.160	3.240	3.580	3.340	34.500
		750	9.160	3.240	3.580	3.490	35.300
	7,0 m H	600	9.940	3.240	3.580	3.340	34.500
		750	9.940	3.240	3.580	3.490	35.300
ZX490H-7G	7,0 m H	600	9.950	3.320	3.540	3.340	33.900
ZX490LCH-7G	6,3 m BE	600	9.160	3.360	3.580	3.340	35.100
	7,0 m H	600	9.940	3.360	3.580	3.340	35.000

**BASIC MACHINE FITTED WITH FRONT AND COUNTERWEIGHT**

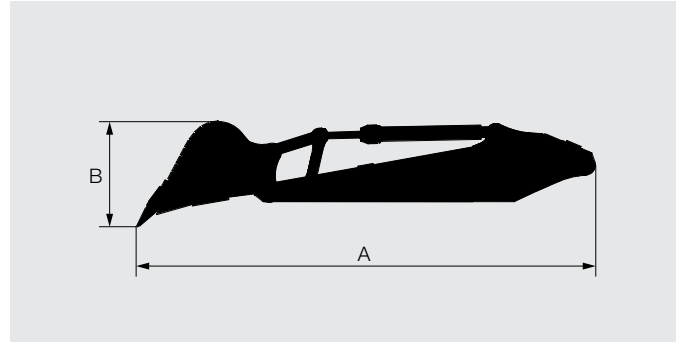
Fixed gauge	Boom length	Arm length	A (mm)	B (mm)	C (mm)	D (mm)
ZX490-7G	6,3 m BE	2,5 m BE	11.490	3.175	3.540	4.130
		2,9 m BE	11.300	3.175	3.540	3.880
	7,0 m H	2,9 m BE	12.060	3.175	3.540	3.860
		3,4 m H	12.040	3.175	3.540	3.450
ZX490LC-7G	6,3 m BE	2,5 m BE	11.490	3.240	3.580	4.130
		2,9 m BE	11.300	3.240	3.580	3.880
	7,0 m H	2,9 m BE	12.060	3.240	3.580	3.860
		3,4 m H	12.040	3.240	3.580	3.450
ZX490H-7G	7,0 m H	2,9 m BE	12.060	3.320	3.540	3.860
		3,4 m H	12.040	3.320	3.540	3.450
ZX490LCH-7G	6,3 m BE	2,5 m BE	11.490	3.360	3.580	4.130
		2,9 m BE	11.300	3.360	3.580	3.880
	7,0 m H	2,9 m BE	12.060	3.360	3.580	3.740
		3,4 m H	12.040	3.360	3.580	3.450

# TRANSPORTATION

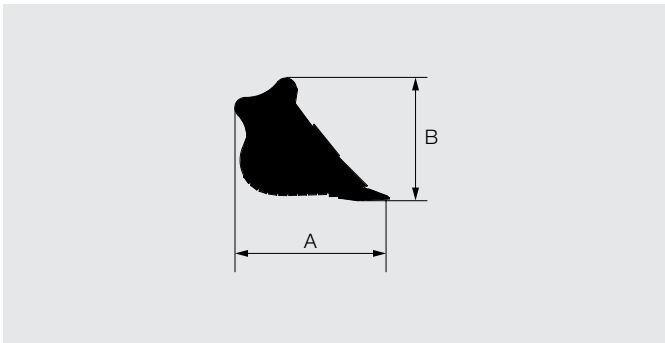
BOOM



ARM AND BUCKET



BUCKET



## BOOM

Boom	A (mm)	B (mm)	Overall weith (mm)	Weight (kg)
6,3 mBE	6.570	2.020	1.100	4.590
7,0m H	7.300	1.780	1.100	4.540

## ARM AND BUCKET

Fixed gauge	Arm	Bucket capacity ISO heaped (m <sup>3</sup> )	A (mm)	B (mm)	Overall width (mm)	Weight (kg)
ZX490-7G / ZX490LC-7G	2,5 m BE	2,50	5.760	1.400	1.770	4.620
	2,9 m BE	2,30	6.030	1.340	1.660	4.350
	3,4 m H	1,90	6.430	1.270	1.540	4.150
		2,10	6.430	1.270	1.630	4.210
ZX490H-7G / ZX490LCH-7G	2,5 m BE	2,50	5.650	1.470	1.820	5.010
	2,9 m BE	2,30	5.950	1.460	1.700	4.800
	3,4 m H	1,90	6.440	1.300	1.500	4.630

## BUCKET

Fixed gauge	Bucket capacity ISO heaped (m <sup>3</sup> )	A (mm)	B (mm)	Overall width (mm)	Weight (kg)
ZX490-7G / ZX490LC-7G (Hoe bucket)	1,60	1.960	1.570	1.360	1.480
	1,90	1.960	1.570	1.540	1.590
	2,10	1.960	1.570	1.630	1.650
	2,30	1.950	1.660	1.660	1.800
	2,50	1.950	1.660	1.770	1.870
	2,65	1.950	1.660	1.860	1.930
ZX490-7G / ZX490LC-7G (Rock bucket)	2,50			1.820	2.360
	3,00			1.830	2.420
ZX490H-7G / ZX490LCH-7G (Rock bucket)	1,90	2.030	1.480	1.500	2.070
	2,10	1.950	1.650	1.580	2.170
	2,30	1.950	1.650	1.700	2.260
	2,50	1.950	1.650	1.820	2.360
	3,00	2.175	1.710	1.830	2.420

# EQUIPMENT

● : Standard equipment ○ : Optional equipment – : Not applicable

ENGINE	ZX490 -7G	ZX490 LC-7G	ZX490 H-7G	ZX490 LCH-7G
Alternator 60 A	●	●	●	●
Auto idle system	●	●	●	●
Auto shut-down control	●	●	●	●
Cartridge-type engine oil filter	●	●	●	●
Cartridge-type fuel main filter	●	●	●	●
Cartridge-type fuel pre-filter with water separator	●	●	●	●
ConSite OIL (sensor) *1	○	○	○	○
Dry-type air filter with evacuator valve (with air filter restriction indicator)	●	●	●	●
Dust-proof net	●	●	●	●
ECO/PWR/HP mode control	●	●	●	●
Electrical fuel feed pump	●	●	●	●
Engine oil drain coupler	●	●	●	●
Expansion tank	●	●	●	●
Fan guard	●	●	●	●
Isolation-mounted engine	●	●	●	●
Pre-cleaner	○	○	○	○
Radiator, oil cooler and intercooler	●	●	●	●
Reversible fan	○	○	○	○

HYDRAULIC SYSTEM	ZX490 -7G	ZX490 LC-7G	ZX490 H-7G	ZX490 LCH-7G
Accessories for breaker	○	○	○	○
Accessories for breaker & crusher	○	○	○	○
Accessories for 2 speed selector	○	○	○	○
Auto power lift	●	●	●	●
Boom mode selector system	●	●	●	●
ConSite OIL (sensor) *1	○	○	○	○
Control valve with main relief valve	●	●	●	●
High mesh full flow filter	●	●	●	●
Drain filter	●	●	●	●
Engine speed sensing system	●	●	●	●
Extra port for control valve	●	●	●	●
Hose rupture valve for arm	○	○	○	○
Hose rupture valve for boom	○	○	○	○
Pilot filter	●	●	●	●
Power boost	●	●	●	●
Shockless valve in pilot circuit	●	●	●	●
Suction filter	●	●	●	●
Two extra port for control valve	●	●	●	●
Work mode selector	●	●	●	●

CAB	ZX490 -7G	ZX490 LC-7G	ZX490 H-7G	ZX490 LCH-7G
All-weather sound suppressed steel cab	●	●	●	●
Auto control air conditioner	●	●	●	●
Bluetooth® integrated radio	●	●	●	●
Cab : CRES VII (center pillar reinforced structure) cab	●	●	●	●
Cab : ROPS (ISO12117-2 : 2008) compliant cab	●	●	●	●
Console height adjustment	●	●	●	●
Drink holder with hot and cool function	●	●	●	●
Electric double horn	●	●	●	●
Engine shut-off switch	●	●	●	●
Evacuation hammer	●	●	●	●
Fire extinguisher bracket	○	○	○	○
Floor mat	●	●	●	●
Fluid-filled elastic mounts (6)	●	●	●	●
Footrest	●	●	●	●
Front guard : OPG front guard Level II (ISO10262 : 1998) compliant	○	○	○	○
Front window washer (1 point)	●	●	●	●
Glove compartment	●	●	●	●
Hands-free calling device	○	○	○	○
Hot and cool box	●	●	●	●
Intermittent windshield wipers	●	●	●	●
Key cylinder light	●	●	●	●
Laminated round glass front window	●	●	–	–
Laminated straight glass front window	–	–	●	●
LED room light	●	●	●	●
Magazine rack	●	●	●	●
Pilot shut-off lever	●	●	●	●
Power outlet 12V	○	○	○	○
Power outlet 24V	●	●	●	●
Rain guard (without OPG front guard)	○	○	○	○
Rear tray	●	●	●	●
Retractable seat belt	●	●	●	●
Rubber radio antenna	●	●	●	●
Seat : air suspension seat with heater	○	○	○	○
Seat : mechanical suspension seat	●	●	●	●
Seat adjustment part : backrest, armrest, height and angle, slide forward / back	●	●	●	●
Seat belt reminder	●	●	●	●
Short wrist control levers	●	●	●	●
Smartphone holder	●	●	●	●
Stereo speakers (2)	●	●	●	●
Sunscreen roller type (multi-use front or side and rear window)	○	○	○	○
Top guard : OPG top guard Level II (ISO10262 : 1998) compliant	–	–	●	●
Transparent roof with slide curtain	●	●	●	●
USB power supply	●	●	●	●
Windows on leftside can be opened	●	●	●	●
8" monitor	●	●	●	●

● : Standard equipment ○ : Optional equipment – : Not applicable

MONITOR SYSTEM	ZX490 -7G	ZX490 LC-7G	ZX490 H-7G	ZX490 LCH-7G
Alarms: overheat, engine warning, engine oil pressure, alternator, minimum fuel level, hydraulic filter restriction, air filter restriction, work mode, overload, etc	●	●	●	●
Alarm buzzers: overheat, engine oil pressure, overload, trouble, etc	●	●	●	●
Display of meters: water temperature, hour, fuel rate, clock, etc	●	●	●	●
Other displays: work mode, auto-idle, glow, rear view monitor, operating conditions, etc	●	●	●	●
35 languages selection	●	●	●	●

LIGHTS	ZX490 -7G	ZX490 LC-7G	ZX490 H-7G	ZX490 LCH-7G
Additional boom LED light with cover	○	○	○	○
Additional cab roof front 2 LED lights	○	○	○	○
Additional cab roof front 4 LED lights	○	○	○	○
Additional cab roof rear 1 LED light	○	○	○	○
LED lights for camera (side and rear view camera)	○	○	○	○
Rotating lamp	○	○	○	○
Working LED light (1)	●	●	●	●

UPPER STRUCTURE	ZX490 -7G	ZX490 LC-7G	ZX490 H-7G	ZX490 LCH-7G
AERIAL ANGLE (270° view camera system)	○	○	○	○
Auto-grease lubricator (without bucket and link pins)	○	○	○	○
Batteries	●	●	●	●
Body top handrail	●	●	●	●
Counterweight 9.080 kg	●	●	●	●
Electric fuel refilling pump with auto stop and filter	○	○	○	○
Electrical grease pump with hose-reel	○	○	○	○
Fuel level float	●	●	●	●
Hydraulic oil level gauge	●	●	●	●
Ladder	○	○	○	○
Lockable fuel refilling cap	●	●	●	●
Lockable machine covers	●	●	●	●
Lockable tool box	●	●	●	●
Platform handrail	●	●	●	●
Right side and rear view camera	●	●	●	●
Sidewalk (cab side)	○	○	○	○
Skid-resistant plates and handrails	●	●	●	●
Swing parking brake	●	●	●	●
Undercover	●	●	●	●
Utility space	●	●	●	●
2 way disconnect switch	●	●	●	●

Standard and optional equipment may vary by country, so please consult authorized dealer for details.

\*1 Engine oil and hydraulic oil monitoring sensor.

\*2 Hitachi Construction Machinery cannot be held liable for theft, any system will just minimize the risk of theft.

Hitachi Construction Machinery Americas reserves the right to change specifications at any time without prior notification. © 2024 All Rights Reserved

UNDERCARRIAGE	ZX490 -7G	ZX490 LC-7G	ZX490 H-7G	ZX490 LCH-7G
Bolt-on sprocket	●	●	●	●
Full track guard	–	–	●	●
Idler	●	●	●	●
Lower rollers (single flange)	●	●	●	●
Lower rollers (double flange)	–	–	○	○
Reinforced Idler	–	–	–	–
Reinforced track links with pin seals	●	●	●	●
Shoe: 600 mm double grouser	○	○	○	○
Shoe: 600 mm triple grouser	●	●	●	●
Shoe: 750 mm triple grouser	○	○	○	○
Tie down hooks (4)	●	●	●	●
Track guards (2 each side) and hydraulic track adjuster	●	●	●	●
Track undercover	○	○	○	○
Travel direction mark on track frame	●	●	●	●
Travel motor covers	●	●	●	●
Travel parking brake	●	●	●	●
Upper rollers	●	●	●	●

FRONT ATTACHMENTS	ZX490 -7G	ZX490 LC-7G	ZX490 H-7G	ZX490 LCH-7G
Arm 2,5 m BE	○	○	○	○
Arm 2,5 m BER	–	–	–	–
Arm 2,9 m BE	○	○	○	○
Arm 2,9 m BER	–	–	–	–
Arm 3,4 m H	●	●	●	●
Arm 3,4 m R	–	–	–	–
Boom 6,3 m BE	○	○	○	○
Boom 6,3 m BER	–	–	–	–
Boom 7,0 m H	●	●	●	●
Boom 7,0 m R	–	–	–	–
Bucket 1,9 m³ (ISO heaped)	●	○	–	–
Bucket 2,1 m³ (ISO heaped)	○	●	–	–
Bucket 1,9 m³ Rock (ISO heaped)	–	–	●	●
Bucket 1,9 m³ R (ISO heaped)	–	–	–	–
Centralized lubrication system	●	●	●	●
Damage prevention plate and square bars	●	●	●	●
Dirt seal on all bucket pins	●	●	●	●
Flanged pin	●	●	●	●
Reinforced welded link A	–	–	○	○
Reinforced link B	–	–	○	○

ATTACHMENTS	ZX490 -7G	ZX490 LC-7G	ZX490 H-7G	ZX490 LCH-7G
Breaker and crusher piping	○	○	○	○
Pilot accumulator	●	●	●	●
Two Pump Combined Flow	○	○	○	○

MISCELLANEOUS	ZX490 -7G	ZX490 LC-7G	ZX490 H-7G	ZX490 LCH-7G
ConSite	○	○	○	○
Exclusive Global e-Service telematics	●	●	●	●
Onboard information controller	●	●	●	●
Standard tool kit	●	●	●	●
Theft prevention system*2	○	○	○	○





# HITACHI

## Reliable Solutions



## REPUTATIONS ARE **BUILT ON IT.**

A legacy built on quality products and service: this is our story. For more than 50 years, Hitachi Construction Machinery Americas has been the regional partner of Hitachi Construction Machinery Group, headquartered in Japan.

Well-respected in North America since the 1970s when Hitachi Construction Machinery Group led a prominent joint venture, Hitachi Construction Machinery Americas recently established a new facility in Newnan, GA. that is poised to support local customers for years to come.

With input from construction professionals on every continent, our machinery is manufactured at state-of-the-art facilities in Japan and exported for sale across the world.

Your local Hitachi Construction Machinery Americas dealer has the resources, expertise, and personnel to work with you, ensuring the best return on investment. Utilizing carefully designed programs and services in conjunction with extensive digital resources, Hitachi Construction Machinery Americas provides a focused approach to supporting you, your business, and the durable construction machinery that your operation relies upon.

Machines in this brochure may be representative of global products not sold in the Latin American market, and used for illustrative purposes only. Options may not be available in all markets. Before operating this machine (incl. satellite communication system) outside of its original country of sale, it may be necessary to make modifications to comply with local regulatory, safety, and legal requirements. Please do not export or operate this machine outside the country of its intended use until such compliance has been confirmed. Contact your dealer for more assistance with regional compliance.

