



HITACHI

ZX75US-5N | ZX85USB-5N | ZAXIS-5 series

Reliable solutions



ZX85USB-5N

SPEC SUMMARY

	ZX75US-5N	ZX85USB-5N
Operating Weight	17,831 lb. (8,088 kg)	18,735 lb. (8,498 kg)
Net Power (ISO 9249)	53.7 hp (39.5 kW) @ 2,000 rpm	53.7 hp (39.5 kW) @ 2,000 rpm

ZAXIS 75 ZAXIS 85

Compact Excavators

A PERFECT FIT: INTUITIVE COMPACT EXCAVATORS





The ZAXIS-5 series of compact excavators puts you firmly in control, so you can feel confident in your machine's performance, and be supported by the technological expertise and services that Hitachi provides.

HIGH PERFORMANCE & QUALITY



Versatility

- **Short tail swing** to work safely in narrow job sites. (ZX75US-5N)
- **1-way/2-way selector valve** for attachment mode (breaker and grapple).
- **3-way selector valve switch** over the hydraulic route to thumb or breaker operation.
- **Faster front attachment** operation.
- **Auxiliary function lever** for various attachments.

Quality Details

- **Boom Cylinder Guard:** The boom cylinder is protected with a cylinder cover to increase durability.
- **Hose Protectors** protect hydraulic hoses on the boom arm.
- Standard **auxiliary hydraulic lines** are plumbed to the end of the boom to simplify attachment use.
- **Durable rubber** minimizes ground damage and allows machines to cross virtually any terrain, including paved surfaces.
- **Standard backfill blade** adds versatility enabling these compact to grade and backfill as well as provide extra stability.





High-Performance

- **Full hydraulic pilot valve**
- **Higher productivity**
- **2 work modes** (Eco and Power) for desired productivity.
- **Eco friendly auto idling system** for lowering unnecessary fuel consumption and emission.
- **The Hitachi hydraulic system**, featuring excellent controllability, allows for quick response to varying job needs, such as powerful excavation and smooth grading.

EASY MAINTENANCE

Easy, ground-level access maintenance points for lubrication.

Longer maintenance interval

Parallel-aligned cooling package for easy cleanup.

Larger engine cover and wider space for maintenance.

Easy to clean radiators

Wet-disc swing brake provides long term maintenance-free performance.

Hinged service door provides wide-open access to the side-by-side oil cooler and radiator for easier core maintenance.

Side-by-side cooling cores resist debris buildup. Dedicated door provides easy access for cleaning.

Spin-on filters provide quick, easy access for filter maintenance.

Ground level at-a-glance gauges for ease of daily inspection and servicing.

Easy Access Fueling

Large fueling port adapted from the larger excavator models allows for quick fueling.

Easy Cleaning

The radiator front is fitted with a dust-proof indoor net, which can swing out for quick cleaning. Air conditioner filters and air cleaner are also easy to clean.

Remote Concentrated Servicing Points

Servicing points are remote clustered on both sides of the machine for convenient ground-level maintenance, including filter replacement and oil level check.





ZX75US-5N



ZX85USB-5N



ZX75US-5N

- **Joystick controls** for effortless operation.
- **Ergonomic design** gives you convenient access to controls.
- **Multi-function color LCD display** makes operation easier.
- **Improved sound isolation** provides quiet environment for the operator.
- **Optimal pedal layout** helps to reduce fatigue.
- **Hydraulic Pilot Control levers** provide smooth control of the front, blade, swing and travel. The levers are ergonomically arranged for easier access and to prevent fatigue.
- **Simple, easy to read color LCD display** provides operational data at a glance.
- **Drink holder** is easy to reach from the operator station.

CONTROL AND COMFORT ZONE

Enhanced comfort and safety features are at your fingertips in the refined cab of ZAXIS-5N excavators, giving you the power to perform productively, with ease and reduced fatigue.

Spacious operator station

Fitted with a wide and adjustable sliding suspension seat and adjustable arm rest, the ZX75U-5N and ZX85USB-5N provide a high level of comfort for operators.

Easy operation

Intuitive controls are in easy reach of the operator and the hydraulic pilot control levers ensure a smooth operation. Low noise levels allow operators to work more comfortably.

Enhanced design

The ZX75U-5N and ZX85USB-5N are equipped with lights on the cab and boom.

Perfectly Positioned Pedals

The swing boom and foldable travel pedals are positioned for easy operation, yet allow plenty of foot room.



Above: Joystick controls for effortless operation and multi-function color LCD display makes operation easier.



ZX75US-5N

Comfort

- Ergonomically designed operator station.
- Low noise level.
- Comfortable seat with suspension and slide features.
- Wider and spacious cabin with large door.

Easy Access

Spacious operator stations have wide entryways, making entering and exiting the cab safe and easy.

DURABILITY AND SAFETY



ZX85USB-5N

Durability and Safety

HN Bushings

Grease impregnated HN bushings and pins provide long 500-hour lubricating intervals.

Highly durable front attachment.

Boom cylinder guard for preventing damages.

Boom hoses are positioned to protect from damages.

4 tie downs on both left and right hand side of dozer blade and rear track for transportation.

Neutral Engine Start System

The engine cannot start unless the shut-off lever is in the locked position, providing safe operation.

SERVICE AND SUPPORT



ZX85USB-5N

Reducing the Total Cost of Ownership

Through our long-term commitment to maintaining a leadership position in technology and service, HCMA supports an extensive network of independent, local dealers focused on providing you with knowledgeable and experienced sales, service and parts personnel.

Your HCMA dealer has the resources, knowledge and personnel to work with you to ensure that you receive the most benefit from your Hitachi construction equipment investment utilizing carefully designed programs and services in conjunction with extensive hands' on training and digital resources.

HCMA provides a totally focused approach to supporting you, your business, and your Hitachi machines.

- Full manufacturer's warranty
- HELP, Hitachi Extended Life Program
- Local parts depot backed by the Hitachi Global Parts Network
- Genuine Hitachi parts

ZX75US-5N SPECIFICATIONS

ENGINE	
Model	Yanmar 4TNV98C
Type	4-cycle water-cooled, common rail direct injection
Aspiration	Natural
Aftertreatment	DPF
No. of cylinders	4
Rated power	
ISO 14396, Gross	57.6 hp (42.4 kW) at 2,000 rpm
ISO 9249, Net	53.7 hp (39.5 kW) at 2,000 rpm
Maximum torque	166.6 lbf-ft (225.9 Nm) at 1,300 min-1
Piston displacement	202 cu. in. (3.318 L)
Bore and stroke	3.9" x 4.3" (98 mm x 110 mm)
Batteries	2 x 12 V/52 Ah

HYDRAULIC SYSTEM			
Hydraulic Pumps			
Main pumps	Open Center, Speed Sensing 3 variable-displacement axial piston pump		
Maximum oil flow	2 x 19 + 15 gpm (2 x 72 + 56 L/min)		
Pilot pump	1 gear pump		
Maximum oil flow	5.33 gpm (20 L/min)		
Auxiliary flow	18.1 gpm (68.4 L/min)		
Auxiliary Pressure	3,278 psi (22.6 MPa)		
Hydraulic Motors			
Travel	2 variable displacement axial piston motors		
Swing	1 axial piston motor		
Relief Valve Settings			
Implement circuit	3,771.0 psi (26.0 MPa)		
Swing circuit	3,843.5 psi (26.5 MPa)		
Travel circuit	4,554.2 psi (31.4 MPa)		
Pilot circuit	565.6 psi (3.9 MPa)		
Hydraulic Cylinders Unit: in (mm)			
	Quantity	Bore	Rod diameter
Boom	1	4.5" (115)	2.6" (65)
Arm	1	3.7" (95)	2.4" (60)
Bucket	1	3.3" (85)	2.2" (55)
Blade	1	4.7" (120)	2.8" (70)

UPPERSTRUCTURE	
Revolving Frame	
D-section frame for resistance to deformation	
Swing Device	
Axial piston motor with planetary reduction gear is bathed in oil. Swing circle is single row. Swing parking brake is spring-set/hydraulic released disc type	
Swing speed	10.5 rpm
Swing torque	12,243.5 lbf -ft (16.6 kNm)

UNDERCARRIAGE	
Tracks	
Tractor-type undercarriage. Welded track frame using selected materials. Side frame welded to track frame	
Numbers of Rollers on Each Side	
Upper rollers	1
Lower rollers	5
Track shoes	40
Travel Device	
Each track driven by 2-speed axial piston motor. Parking brake is spring-set/hydraulic-released disc type. Automatic transmission system: High-Low	
Travel speeds	High: 0 to 3.1 mph (0 to 5.0 km/h)
	Low: 0 to 1.9 mph (0 to 3.1 km/h)
Drawbar pull	14,661 lb (6,650 kg)
Maximum traction force	14,657.6 lbf (65.2 kN)
Gradeability	70% (35 degree) Maximum

ENVIRONMENT	
Engine Emissions	EPA Final Tier 4
Sound Level*	
Sound level in cab according to ISO 6396: 2008	*LpA 68.8 (right)/71.8 (left) dB(A)
External sound level according to ISO 6395: 2008	*LwA 97.9 dB(A)

SERVICE REFILL CAPACITIES	
Unit: gal (L)	
Fuel tank	35.7 (135.0)
Engine coolant	2.6 (9.7)
Engine oil	3.2 (12.3)
Travel device (each side)	0.3 (1.2)
Hydraulic system	26.4 (100)
Hydraulic oil tank	15 (56)

WEIGHTS AND GROUND PRESSURE

Operating Weight and Ground Pressure

Shoe type	Shoe width in (mm)	Operating Weight lb (kg)	Ground Pressure psi (kPa)
Rubber Crawler Pads	18" (450 mm)	17,831 lb (8,088 kg)	5.1 psi (35.0 kPa)
Triple Semi-Grouser Shoe	18" (450 mm)	17,787 lb (8,068 kg)	5.1 psi (35.0 kPa)
Triple Semi-Grouser Shoe	24" (600 mm)	18,206 lb (8,258 kg)	3.9 psi (27.0 kPa)
Continuous Rubber Belt	18" (450 mm)	17,897 lb (8,118 kg)	5.1 psi (35.0 kPa)

*With 6' 11" (2,120 mm) arm, 2,877 lb (1,305 kg) counterweight, full fuel tank and 165 lb (75 kg) operator

Optional Components Weight

Unit: lb (kg)

18" (450 mm) Rubber Crawler Pads	6,400 lb (2,903 kg)
18" (450 mm) Continuous Rubber Belt	6,321 lb (2,867 kg)
18" (450 mm) Triple Semi-Grouser Shoe	6,285 lb (2,851 kg)
24" (600 mm) Triple Semi-Grouser Shoe	6,669 lb (3,025 kg)
1 piece boom with arm cylinder	1,096 lb (497 kg)
6' 11" (2.12 m) Arm with Bucket Cylinder and Linkage	608 lb (276 kg)
Boom Cylinder	196 lb (89 kg)
Standard Counterweight	2,877 lb (1,305 kg)

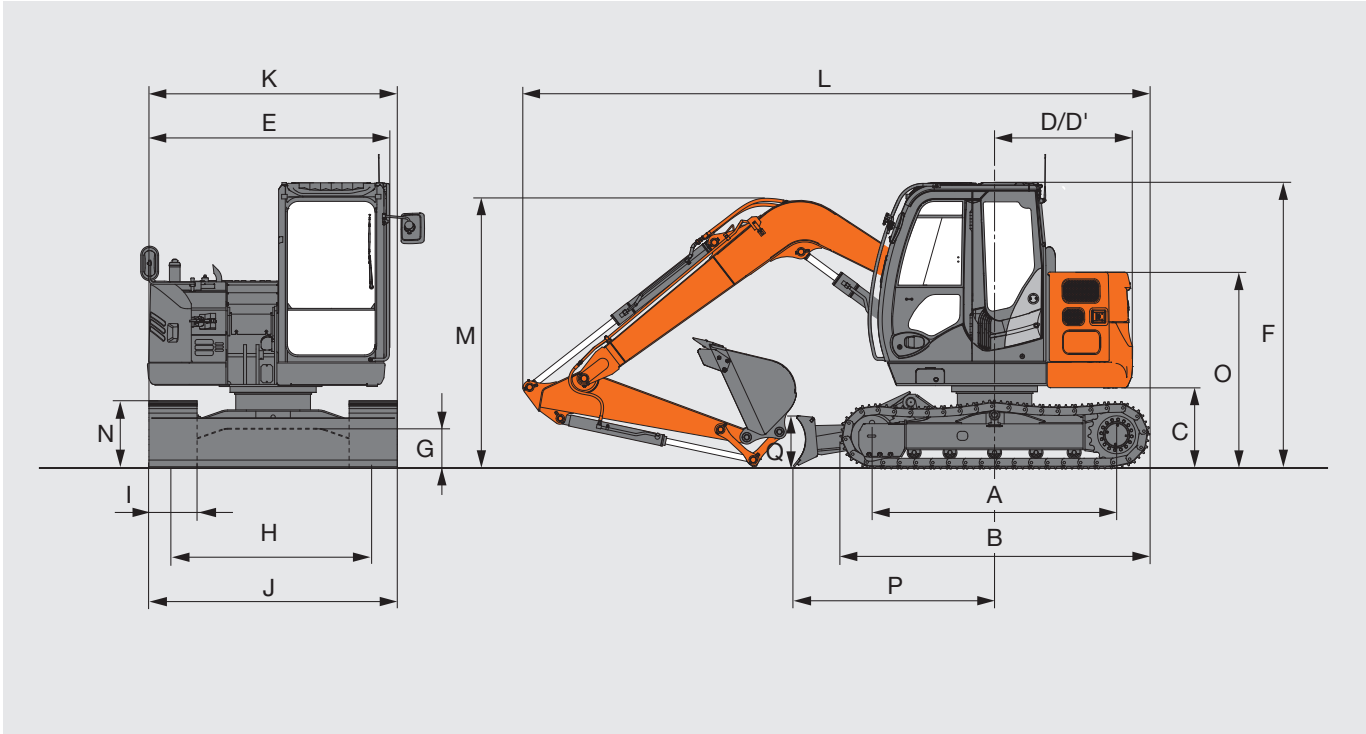
BUCKET AND ARM DIGGING FORCE

Unit: lbf (kN)

Arm length	6' 11" (2.120 m)
Arm crowd force* ISO 6015: 2006	7,194 (32.0)
Bucket digging force* ISO 6015: 2006	12,364 (55.0)

ZX75US-5N SPECIFICATIONS

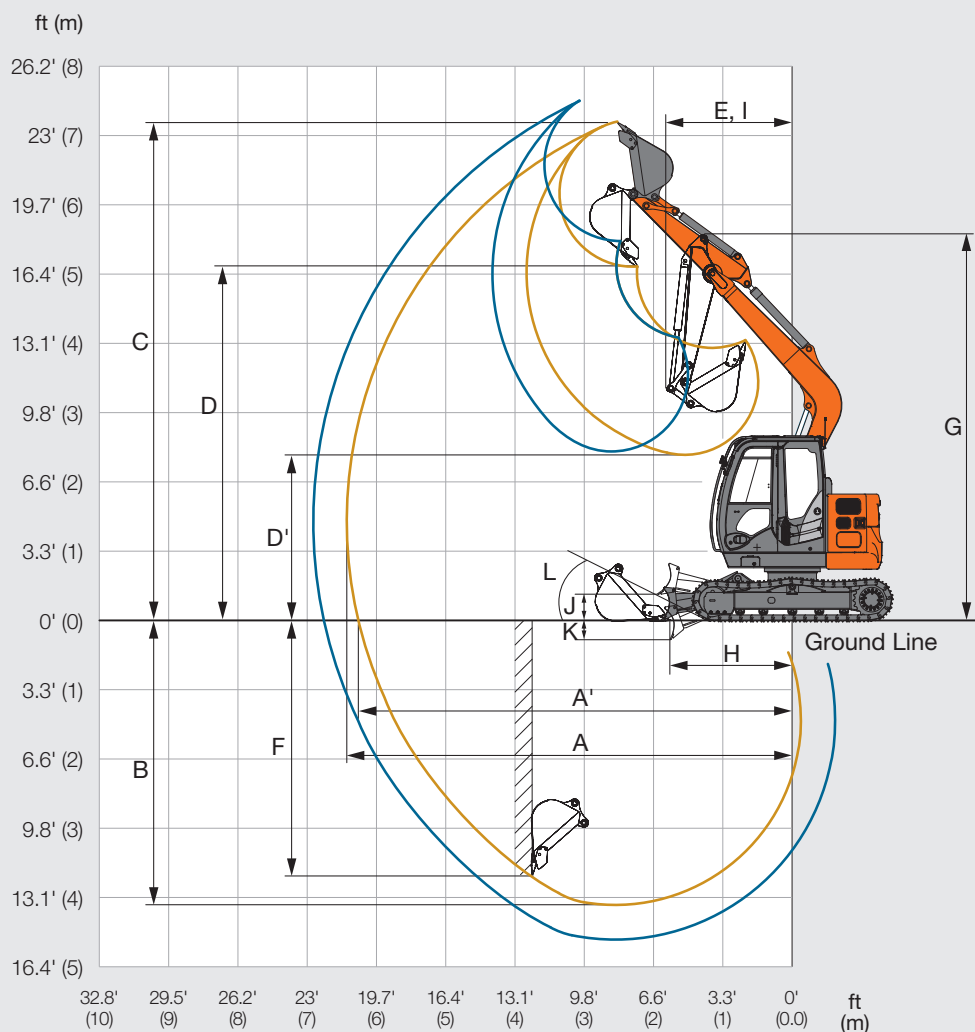
DIMENSIONS



Unit: ft-in (mm)

		ZX75US-5N
	Arm length	6' 11" (2,120)
A	Distance between tumblers	7' 6" (2,290)
B	Undercarriage length	9' 7" (2,920)
C	Counterweight clearance	2' 4" (730)
D	Rear-end swing radius	4' 3" (1,290)
D'	Rear-end length	4' 3" (1,290)
E	Overall width of upperstructure	7' 4" (2,260)
F	Overall height of cab	8' 10" (2,690)
G	Min. ground clearance	1' 2" (360)
H	Track gauge	6' 2" (1,870)
I	18" (450 mm) Track shoe width	18" (450)
	24" (600 mm) Track shoe width	24" (600)
J	18" (450 mm) Undercarriage width	7' 7" (2,320)
	24" (600 mm) Undercarriage width	8' 1" (2,470)
	Blade width with 18" (450 mm) shoes	7' 7" (2,320)
	Blade width with 24" (600 mm) shoes	8' 1" (2,470)
K	18" (450 mm) Overall width	7' 7" (2,320)
	24" (600 mm) Overall width	8' 1" (2,470)
L	Overall length blade in front	20' 11" (6,370)
M	Overall height of boom	9' 3" (2,830)
N	Track height	2' 2" (650)
O	Engine cover height	6' 1" (1850)
P	Horizontal distance to blade	6' 2" (1,890)
Q	Blade height	1' 7" (480)

WORKING RANGES

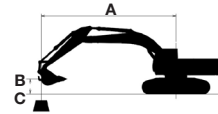


Unit: ft-in (mm)

		ZX75US-5N
Arm length		6' 11" (2,120)
A	Max. digging reach	22' 8" (6,920)
A'	Max. digging reach (on ground)	22' 2" (6,760)
B	Max. digging depth	15' 1" (4,610)
C	Max. cutting height	25' 0" (7,610)
D	Max. dumping height	18' 1" (5,510)
D'	Min. dumping height	7' 11" (2,410)
E	Min. swing radius	7' 1" (2,170)
F	Max. vertical wall digging depth	13' 10" (4,220)
G	Front height at Min. swing radius	18' 5" (5,610)
H	Min. level crowding distance	5' 6" (1,670)
J	Blade bottom highest position above ground	1' 2" (360)
K	Blade bottom lowest position above ground	1' (300)
L	Blade lift angle	27 degrees

ZX75US-5N LIFTING CAPACITIES

Boldface type indicates hydraulically limited capacities; lightface type indicates stability-limited capacities, in kg (lb.). Ratings are at bucket lift hook, using standard counterweight, situated on firm, level, uniform supporting surface. Total load includes weight of cables, hook, etc. Figures do not exceed 87% of hydraulic capacity or 75% of weight needed to tip machine. All lift capacities are based on ISO 10567.



A: Load radius
B: Load point height
C: Machine capacity

Rating over-front, Rating over-side or 360 degrees Unit: lb (kg)

ZX75US-5N								
Load Point Height	5' (1.5 m)		10' (3.0 m)		15' (4.5 m)		20' (6.0 m)	
Horizontal Distance from Centerline of Rotation	Over Front	Over Side	Over Front	Over Side	Over Front	Over Side	Over Front	Over Side
With 12' 8" (3.72 m) boom, 6' 11" (2.12 m) arm, 0.37 yd³ (0.28-m³) bucket, 18" (450 mm) rubber pads, and 7' 9" (2,320 mm) blade								
15' (4.5 m)					3,252 (1,475)	3,252 (1,475)		
10' (3.0 m)			4,043 (1,834)	4,043 (1,834)	3,557 (1,613)	3,557 (1,613)		
5' (1.5 m)			6,313 (2,864)	6,167 (2,797)	4,317 (1,958)	3,397 (1,541)		
Ground Line			7,734 (3,508)	5,797 (2,629)	4,956 (2,248)	3,246 (1,472)		
-5' (-1.5 m)	7,813 (3,544)	7,813 (3,544)	7,746 (3,514)	5,718 (2,594)	4,964 (2,252)	3,199 (1,451)		
-10' (-3.0)	11,068 (5,020)	11,068 (5,020)	6,044 (2,742)	5,870 (2,663)				
With 12' 8" (3.72 m) boom, 6' 11" (2.12 m) arm, 0.37 yd³ (0.28 m³) bucket, 24" (600 mm) shoes, and 8' 1" (2,470 mm) blade								
15" (4.5 m)					3,252 (1,475)	3,252 (1,475)		
10' (3.0)			4,043 (1,834)	4,043 (1,834)	3,557 (1,613)	3,557 (1,613)		
5' (1.5 m)			6,313 (2,864)	6,263 (2,841)	4,317 (1,958)	3,452 (1,566)		
Ground Line			7,734 (3,508)	5,893 (2,673)	4,956 (2,248)	3,301 (1,497)		
-5' (-1.5 m)	7,813 (3,544)	7,813 (3,544)	7,746 (3,514)	5,814 (2,637)	4,964 (2,252)	3,254 (1,476)		
-10' (-3.0 m)	11,068 (5,020)	11,068 (5,020)	6,044 (2,742)	5,967 (2,707)				
-15' (-4.5 m)								

EQUIPMENT

●: Standard equipment ○: Optional equipment

ENGINE	ZX75US-5N
Yanmar 4TNV98C 202 cu. in. (3.318 L)	●
ISO 9249: 53.7 hp (39.5 kW) at 2,000 rpm	●
ISO 14396: 57.6 hp (42.4 kW) at 2,000 rpm	●
60 amp alternator, 12 volt	●
Antifreeze protection to -22°F (-30°C)*	●
Certified to EPA Tier 4 Final	●
Direct injection	●
Electric fuel shutoff	●
Fuel filter & water separator	●
Full flow oil filter	●
Heavy duty low maintenance battery	●
Isolation mounted radiator/oil cooler trash screen	●
Low-noise fan with guard	●
Single dry-type air filter	●
DPF	●

HYDRAULIC SYSTEM	ZX75US-5N
Auxiliary hydraulic lines with a selector valve to arm	●
Axial plunger swing motor	●
Hand controlled proportional auxiliary hydraulic lines	●
Hydraulic shut-off lever	●
Hydraulic pilot controls for boom, arm, bucket, swing, blade and propel	●
Excavator to backhoe control pattern change	●
Wet disk swing brake	●
Open center with three variable displacement pumps	●

UNDERCARRIAGE	ZX75US-5N
18" (450 mm) rubber crawler pads	●
18" (450 mm) continuous rubber belt	○
18" (450 mm) steel track	○
24" (600 mm) steel track	○
Backfill blade 7' 7" (2,320 mm) for 18" (450 mm) track	●
Backfill blade 8' 1" (2,470 mm) for 24" (600 mm) track	○
Axial plunger propel motor	●
Planetary final drive	●
Propel motor shield	●
Two speed travel with automatic shifting	●

UPPER STRUCTURE	ZX75US-5N
360 degree upper structure rotation	●
Counterweight; 2,877 lb (1,305 kg)	●
Hydraulic reservoir	●
Rear-view mirrors	●
ROPS/OPG/FOPS cab with air conditioning and heater	●
Tool box	●
Vandal locks for:	
Cab door	●
Fuel cap	●
Service doors	●
Work light:	
One mounted on boom	●
One mounted on cab	●
Rear view camera	●
Reduced swing configuration	●

FRONT ATTACHMENTS	ZX75US-5N
Boom 12' 3" (3.72 m)	●
Arm 6' 11" (2.12 m) assembly with bucket cylinder and linkage	●
Dirt seal on all bucket pins	●

OPERATOR'S STATION	ZX75US-5N
12 Volt outlet	●
2 in. retractable seat belt	●
Adjustable control positions (levers to seat, seat to pedals)	●
AM-FM radio	●
Arm rests	●
Auto-climate control/air conditioner, heater with pressurizer	●
Coat hook	●
Cup holder	●
Deluxe adjustable cloth seat with suspension	●
Easy access air conditioning filter	●
Engine oil pressure warning indicator with audible alarm	●
Floor mat	●
Four fluid-filled elastic mounts	●
Horn	●
Hot/cold box compartment	●
Interior light	●
Machine information center	●
Motion alarm with cancel switch	●
ECO/Power mode selection	●

OPERATOR'S STATION, cont.	ZX75US-5N
Multi-function, color LCD monitor system with:	
Air filter restriction indicator	●
Alternator charge indicator	●
Auto idle indicator	●
Auto shut-down indicator	●
Check engine indicator	●
Clock	●
Diagnostic capability	●
Engine coolant temperature gauge	●
Engine coolant overheat warning	●
Fault code alert indicator	●
Fuel gauge with low fuel indicator	●
Fuel rate display	●
Hour meter	●
Indicator with audible alarm	●
Maintenance tracking	●
Multiple language capability	●
Systems monitoring capability	●
Wiper mode indicator	●
Work lights on indicator	●
Pilot control shut-off lever	●
Short stroke, low effort pilot levers	●
Tinted safety glass	●
Transparent tinted roof hatch with sunshade	●
Windshield wiper/washer with intermittent speed	●

ZX85USB-5N SPECIFICATIONS

ENGINE	
Model	Yanmar 4TNV98C
Type	4-cycle water-cooled, common rail direct injection
Aspiration	Natural
Aftertreatment	DPF
No. of cylinders	4
Rated power	
ISO 14396: Gross	57.6 hp (42.4 kW) at 2,000 rpm
ISO 9249: Net	53.7 hp (39.5 kW) at 2,000 rpm
Maximum torque	166.6 lbf-ft (225.9 Nm) at 1,300 min-1
Piston displacement	202 cu. in. (3.318 L)
Bore and stroke	3.9" x 4.3" (98 mm x 110 mm)
Batteries	2 x 12 V/52 Ah

HYDRAULIC SYSTEM			
Hydraulic Pumps			
Main pumps	Open Center, Speed-Sensing 3 variable-displacement axial piston pump		
Maximum oil flow	2 x 19 + 15 gpm (2 x 72 + 56 L/min)		
Pilot pump	1 gear pump		
Maximum oil flow	5.33 gpm (20 L/min)		
Auxiliary flow	18.1 gpm (68.4 L/min)		
Auxiliary pressure	3,278 psi (22.6 MPa)		
Hydraulic Motors			
Travel	2 variable displacement axial piston motors		
Swing	1 axial piston motor		
Relief Valve Settings			
Implement circuit	3,771.0 psi (26.0 MPa)		
Swing circuit	3,843.5 psi (26.5 MPa)		
Travel circuit	4,554.2 psi (31.4 MPa)		
Pilot circuit	565.6 psi (3.9 MPa)		
Hydraulic Cylinders Unit: in (mm)			
	Quantity	Bore	Rod diameter
Boom	1	4.5" (115)	2.6" (65)
Arm	1	3.7" (95)	2.4" (60)
Bucket	1	3.3" (85)	2.2" (55)
Blade	1	4.7" (120)	2.8" (70)
Boom swing	1	4.3" (110)	2.4" (60)

UPPERSTRUCTURE	
Revolving Frame	
D-section frame for resistance to deformation	
Swing Device	
Axial piston motor with planetary reduction gear is bathed in oil. Swing circle is single row. Swing parking brake is spring-set/hydraulic released disc type	
Swing speed	10.5 rpm
Swing torque	12,243.5 lbf-ft (16.6 kNm)
Max. boom swing angle, left/right	60 degrees/60 degrees

UNDERCARRIAGE	
Tracks	
Tractor-type undercarriage. Welded track frame using selected materials. Side frame welded to track frame	
Numbers of Rollers on Each Side	
Upper rollers	1
Lower rollers	5
Track shoes	40
Travel Device	
Each track driven by 2-speed axial piston motor. Parking brake is spring-set/hydraulic-released disc type. Automatic transmission system: High-Low	
Travel speeds	High: 0 to 3.1 mph (0 to 5.0 km/h) Low: 0 to 1.9 mph (0 to 3.1 km/h)
Drawbar pull	14,661 lb (6,650 kg)
Maximum traction force	14,657.6 lbf (65.2 kN)
Gradeability	70% (35 degree) Maximum

ENVIRONMENT	
Engine Emissions	EPA Final Tier 4
Sound Level*	
Sound level in cab according to ISO 6396: 2008	*LpA 71.3 (right)/71.7 (left) dB(A)
External sound level according to ISO 6395: 2008	*LwA 97.8 dB(A)

SERVICE REFILL CAPACITIES	
Unit: gal (L)	
Fuel tank	31.7 (120.0)
Engine coolant	2.6 (9.7)
Engine oil	3.2 (12.3)
Travel device (each side)	0.3 (1.2)
Hydraulic system	26.4 (100)
Hydraulic oil tank	15 (56)

WEIGHTS AND GROUND PRESSURE

Operating Weight and Ground Pressure

Shoe type	Shoe width in (mm)	Operating Weight lb (kg)	Ground Pressure psi (kPa)
Rubber Crawler Pads	18" (450 mm)	18,735 lb (8,498 kg)	5.4 psi (37.0 kPa)
Triple Semi-Grouser Shoe	18" (450 mm)	18,757 lb (8,508 kg)	5.4 psi (37.0 kPa)
Triple Semi-Grouser Shoe	24" (600 mm)	19,220 lb (8,718 kg)	4.1 psi (28.0 kPa)
Continuous Rubber Belt	18" (450 mm)	18,669 lb (8,468 kg)	5.4 psi (37.0 kPa)

*With 6' 11" (2,120 mm) arm, 2,877 lb (1,305 kg) counterweight, full fuel tank and 165 lb (75 kg) operator

Optional Components Weight

Unit: lb (kg)

18" (450 mm) Rubber Crawler Pads	6,329 lb (2,871 kg)
18" (450 mm) Continuous Rubber Belt	6,268 lb (2,843 kg)
18" (450 mm) Triple Semi-Grouser Shoe	6,215 lb (2,819 kg)
24" (600 mm) Triple Semi-Grouser Shoe	6,548 lb (2,970 kg)
1 piece boom with arm cylinder	1,082 lb (491 kg)
6' 11" (2.12 m) Arm with Bucket Cylinder and Linkage	606 lb (275 kg)
Boom Cylinder	157 lb (71 kg)
Standard Counterweight	3,104 lb (1,408 kg)

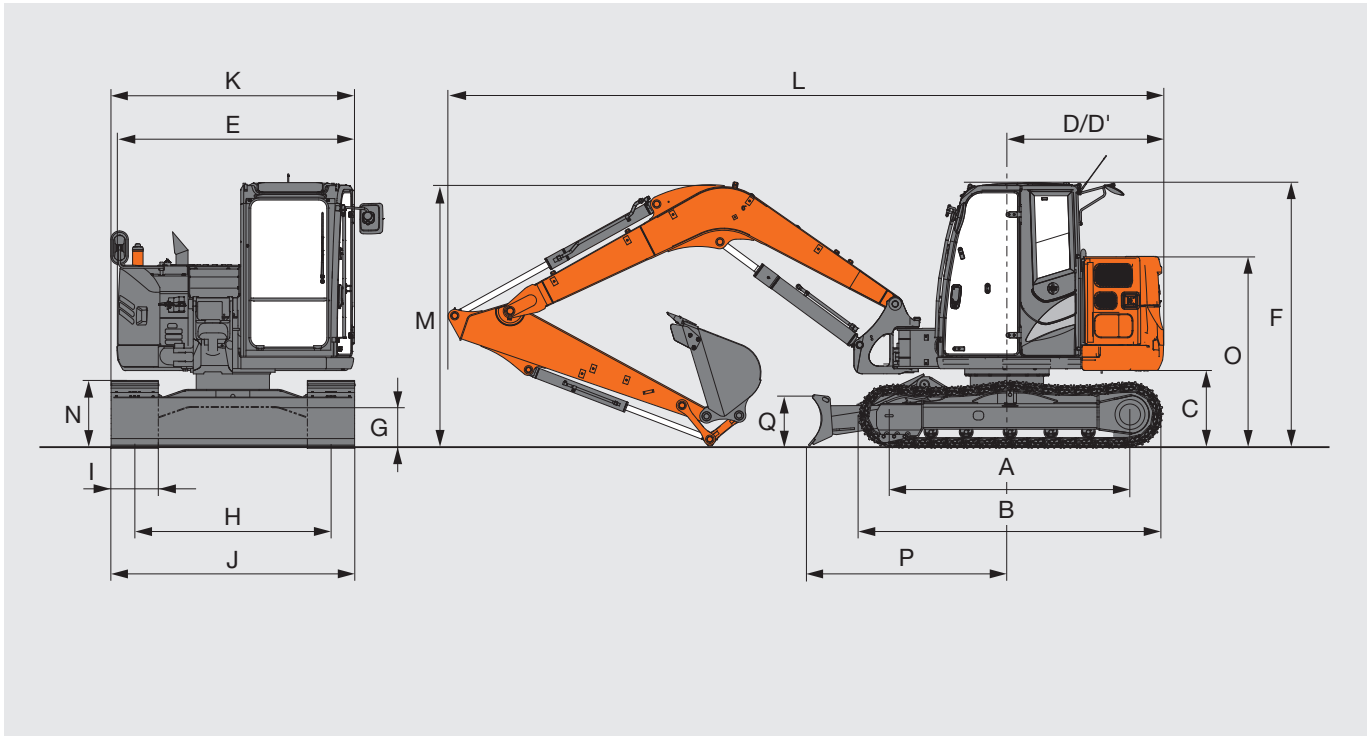
BUCKET AND ARM DIGGING FORCE

Unit: lbf (kN)

Arm length	6' 11" (2.120 m)
Arm crowd force* ISO 6015: 2006	7,194 (32.0)
Bucket digging force* ISO 6015: 2006	12,364 (55.0)

ZX85USB-5N SPECIFICATIONS

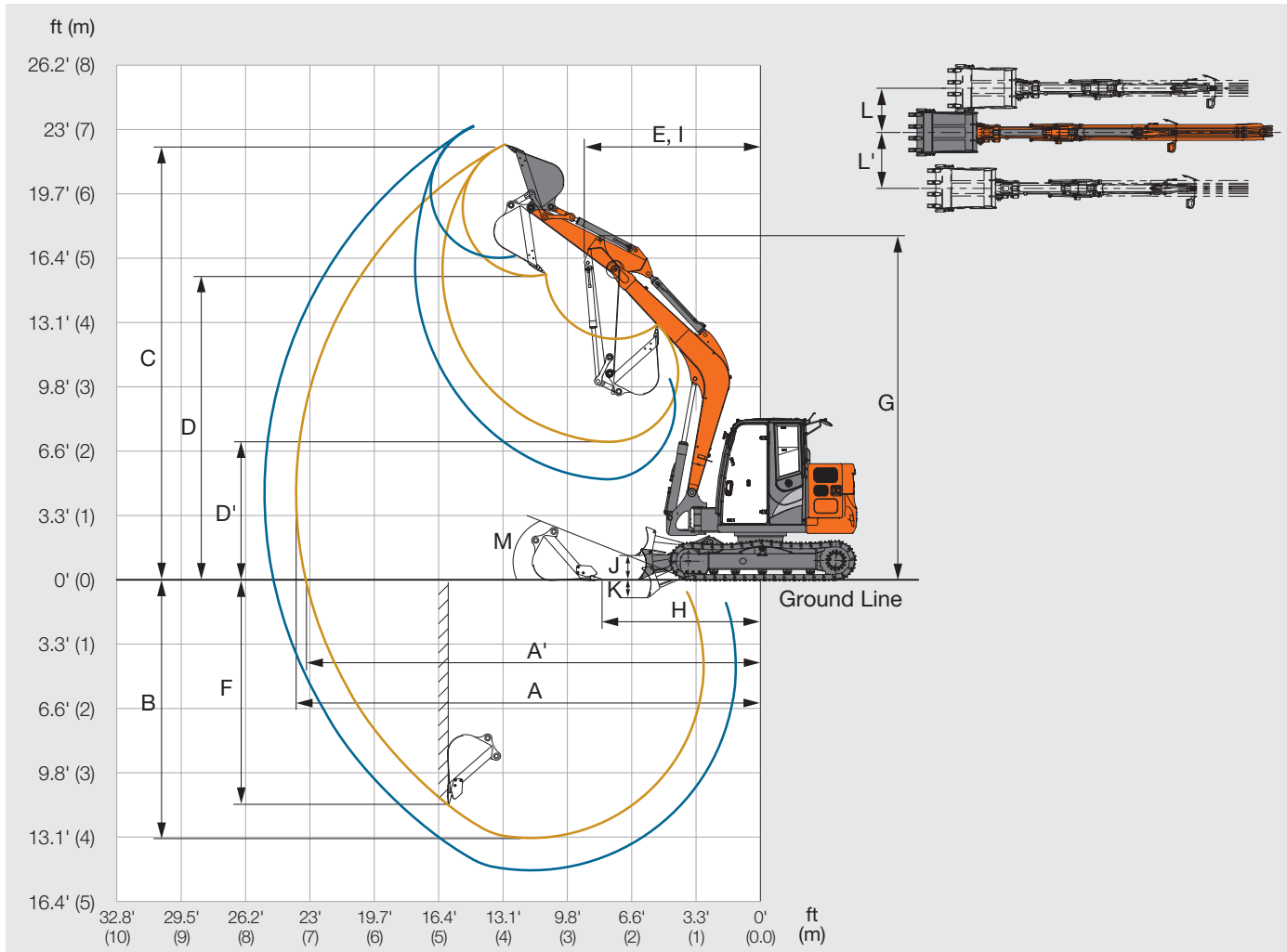
DIMENSIONS



Unit: ft-in (mm)

		ZX85USB-5N
	Arm length	6' 11" (2,120)
A	Distance between tumblers	7' 6" (2,290)
B	Undercarriage length	9' 7" (2,920)
C	Counterweight clearance	2' 4" (720)
D	Rear-end swing radius	4' 11" (1,490)
D'	Rear-end length	4' 11" (1,490)
E	Overall width of upperstructure	7' 4" (2,260)
F	Overall height of cab	8' 4" (2,530)
	Overall height with 18" (450 mm) rubber crawler pads	8' 7" (2,610)
	Overall height with steel shoes	8' 4" (2,530)
G	Min. ground clearance	1' 2" (360)
H	Track gauge	5' 9" (1,750)
I	18" (450 mm) Track shoe width	18" (450)
	24" (600 mm) Track shoe width	24" (600)
J	18" (450 mm) Undercarriage width	7' 3" (2,220)
	24" (600 mm) Undercarriage width	7' 9" (2,350)
	Blade width with 18" (450 mm) shoes	7' 3" (2,200)
	Blade width with 24" (600 mm) shoes	7' 9" (2,350)
K	18" (450 mm) Overall width	7' 3" (2,220)
	24" (600 mm) Overall width	7' 9" (2,350)
L	Overall length blade in front	22' 5" (6,820)
M	Overall height of boom	8' 6" (2,600)
N	Track height	2' 2" (650)
O	Engine cover height	5' 11" (1,810)
P	Horizontal distance to blade	6' 2" (1,880)
Q	Blade height	1' 7" (480)

WORKING RANGES

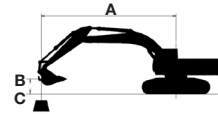


Unit: ft-in (mm)

		ZX85USB-5N
Arm length		6' 11" (2,120)
A	Max. digging reach	25' 3" (7,700)
A'	Max. digging reach (on ground)	24' 10" (7,560)
B	Max. digging depth	14' 10" (4,510)
C	Max. cutting height	23' 5" (7,140)
D	Max. dumping height	18' 8" (5,080)
D'	Min. dumping height	5' 6" (1,670)
E	Min. swing radius	7' 1" (2,170)
F	Max. vertical wall digging depth	13' 3" (4,050)
G	Front height at Min. swing radius	17' 8" (5,390)
H	Min. level crowding distance	7' 7" (2,310)
I	Working radius at Min. swing radius (Max. boom-swing angle)	11' 1" (3,380)
J	Blade bottom highest position above ground	1' 1" (340)
K	Blade bottom lowest position above ground	1' 1" (320)
L/L'	Offset distance (Max. boom swing angle)	3' (910)/2' 4" (720)
M	Blade lift angle	26 degrees

ZX85USB-5N LIFTING CAPACITIES

Boldface type hydraulically limited capacities; lightface type indicates stability-limited capacities, in kg (lb.). Ratings are at bucket lift hook, using standard counterweight, situated on firm, level, uniform supporting surface. Total load includes weight of cables, hook, etc. Figures do not exceed 87% of hydraulic capacity or 75% of weight needed to tip machine. All lift capacities are based on ISO 10567.



A: Load radius
B: Load point height
C: Machine capacity

Rating over-front, Rating over-side or 360 degrees Unit: lb (kg)

ZX85USB-5N								
Load Point Height	5' (1.5 m)		10' (3.0 m)		15' (4.5 m)		20' (6.0 m)	
Horizontal Distance from Centerline of Rotation	Over Front	Over Side	Over Front	Over Side	Over Front	Over Side	Over Front	Over Side
With 12' 2" (3.67 m) boom, 6' 11" (2.12 m) arm, 0.37 yd³ (0.28 m³) bucket, 18" (450 mm) rubber pads, and 7' 3" (2,200 mm) blade								
15' (4.5 m)					3,825 (1,735)	1,656 (3,651)		
10' (3.0 m)					4,506 (2,044)	3,521 (1,597)	3,988 (1,809)	2,253 (1,022)
5' (1.5 m)					5,773 (2,619)	3,092 (1,488)	4,339 (1,968)	2,174 (986)
Ground Line			5,682 (2,577)	5,391 (2,445)	6,597 (2,992)	3,092 (1,403)	4,561 (2,069)	2,098 (952)
-5' (-1.5 m)	5,914 (2,683)	5,914 (2,683)	10,516 (4,770)	5,397 (2,448)	6,322 (2,868)	3,036 (1,377)		
-10' (-3.0)			7,012 (3,130)	5,560 (3,130)				
With 12' 2" (3.67 m) boom, 6' 11" (2.12 m) arm, 0.37 yd³ (0.28 m³) bucket, 24" (600 mm) shoes, and 8' 1" (2470 mm) blade								
15" (4.5 m)					3,825 (1,735)	3,702 (1,679)		
10' (3.0)					4,506 (2,044)	3,572 (1,620)	3,988 (1,809)	2,289 (1,038)
5' (1.5 m)					5,773 (2,619)	3,332 (1,511)	4,339 (1,968)	2,210 (1,002)
Ground Line			5,682 (2,577)	5,479 (2,485)	6,597 (2,992)	3,143 (1,426)	4,561 (2,069)	2,134 (968)
-5' (-1.5 m)	5,914 (2,683)	5,914 (2,683)	10,516 (4,770)	5,485 (2,488)	6,322 (2,868)	3,087 (1,400)		
-10' (-3.0 m)			7,012 (3,130)	5,647 (3,130)				
With 12' 2" (3.67 m) boom, 6' 11" (2.12 m) arm, less bucket, 18" (450 mm) continuous rubber belt, and 7' 3" (2,200 mm) blade								
15" (4.5 m)					3,810 (1,728)	3,480 (1,579)		
10' (3.0)					4,520 (2,050)	3,350 (1,520)	3,988 (1,805)	2,140 (971)
5' (1.5 m)					5,790 (2,626)	3,110 (1,411)	4,340 (1,968)	2,060 (934)
Ground Line			5,720 (2,595)	5,090 (2,309)	6,600 (2,994)	2,930 (1,329)	4,560 (2,068)	1,990 (903)
-5' (-1.5 m)	5,970 (2,708)	5,970 (2,708)	10,490 (4,758)	5,090 (2,309)	6,310 (2,862)	2,880 (1,306)		
-10' (-3.0 m)			6,920 (3,139)	5,260 (2,386)				

EQUIPMENT

●: Standard equipment ○: Optional equipment

ENGINE	ZX85USB-5N
Yanmar 4TNV98C 202 cu. in. (3.318 L)	●
ISO 9249: 53.7 hp (39.5 kW) at 2,000 rpm	●
ISO 14396: 57.6 hp (42.4 kW) at 2,000 rpm	●
60 amp alternator, 12 volt	●
Antifreeze protection to -22°F (-30°C)	●
Certified to EPA Tier 4 Final	●
Direct injection	●
Electric fuel shutoff	●
Fuel filter & water separator	●
Full flow oil filter	●
Heavy duty low maintenance battery	●
Isolation mounted radiator/oil cooler trash screen	●
Low-noise fan with guard	●
Single dry-type air filter	●
DPF	●

HYDRAULIC SYSTEM	ZX85USB-5N
Auxiliary hydraulic lines with a selector valve to arm	●
Axial plunger swing motor	●
Hand controlled proportional auxiliary hydraulic lines	●
Hydraulic shut-off lever	●
Hydraulic pilot controls for boom, arm, bucket, swing, blade and propel	●
Excavator to backhoe control pattern change	●
Wet disk swing brake	●
Open center with three variable displacement pumps	●

UNDERCARRIAGE	ZX85USB-5N
18" (450 mm) rubber crawler pads	●
18" (450 mm) continuous rubber belt	○
18" (450 mm) steel track	○
24" (600 mm) steel track	○
Backfill blade 7' 3" (2,200) for 18" (450 mm) track	●
Backfill blade 7' 9" (2,350) for 24" (600 mm) track	○
Axial plunger propel motor	●
Planetary final drive	●
Propel motor shield	●
Two speed travel with automatic shifting	●

UPPER STRUCTURE	ZX85USB-5N
360 degree upper structure rotation	●
Counterweight; 3,104 lb (1,408 kg)	●
Hydraulic reservoir	●
Rear-view mirrors	●
ROPS/OPG/FOPS cab with air conditioning and heater	●
Tool box	●
Vandal locks for:	
Cab door	●
Fuel cap	●
Service doors	●
Work light:	
One mounted on boom	●
One mounted on cab	●
Rear view camera	●

FRONT ATTACHMENTS	ZX85USB-5N
Boom 12' 3" (3.72 m)	●
Arm 6' 11" (2.12 m) assembly with bucket cylinder and linkage	●
Dirt seal on all bucket pins	●

OPERATOR'S STATION	ZX85USB-5N
12 Volt outlet	●
2 in. retractable seat belt	●
Adjustable control positions (levers to seat, seat to pedals)	●
AM-FM radio	●
Arm rests	●
Auto-climate control/air conditioner, heater with pressurizer	●
Coat hook	●
Cup holder	●
Deluxe adjustable cloth seat with suspension	●
Easy access air conditioning filter	●
Engine oil pressure warning indicator with audible alarm	●
Floor mat	●
Four fluid-filled elastic mounts	●
Horn	●
Hot/cold box compartment	●
Interior light	●
Machine information center	●
Motion alarm with cancel switch	●
ECO/Power mode selection	●

OPERATOR'S STATION, cont.	ZX85USB-5N
Multi-function, color LCD monitor system with:	
Air filter restriction indicator	●
Alternator charge indicator	●
Auto idle indicator	●
Auto shut-down indicator	●
Check engine indicator	●
Clock	●
Diagnostic capability	●
Engine coolant temperature gauge	●
Engine coolant overheat warning	●
Fault code alert indicator	●
Fuel gauge with low fuel indicator	●
Fuel rate display	●
Hour meter	●
Maintenance tracking	●
Multiple language capability	●
Systems monitoring capability	●
Wiper mode indicator	●
Work lights on indicator	●
Pilot control shut-off lever	●
Short stroke, low effort pilot levers	●
Tinted safety glass	●
Transparent tinted roof hatch with sunshade	●
Windshield wiper/washer with intermittent speed	●



HITACHI

Reliable solutions



REPUTATIONS ARE
BUILT ON IT.

With manufacturing facilities in Banshu, Ryugasaki, Tierra, Hitachinaka, and Tsuchiura, Japan, and the U.S. corporate office and campus in Newnan, Georgia, Hitachi Construction Machinery Americas Inc. (HCMA) has the experience and technology to design, engineer, manufacture, and service your Hitachi construction machinery. The HCMA team is securely poised as your go-to source in the North American and Latin American construction machinery markets.

Through our long-term commitment to maintaining a leadership position in technology, service, and support, HCMA supports an extensive network of independent, local dealers focused on providing you with knowledgeable and experienced sales, service, and parts personnel — all backed by dedicated HCMA support teams.

Your HCMA dealer has the resources, expertise, and personnel to work with you to ensure that you receive the most benefit from your Hitachi investment, utilizing carefully designed programs and services in conjunction with extensive digital resources. HCMA provides a totally focused approach to supporting you, your business, and your Hitachi construction machinery.

Machines representative of global product. Options may not be available in all markets. Prior to operating this machine, including satellite communication system, in a country other than a country of its intended use, it may be necessary to make modifications to it so that it complies with the local regulatory standards (including safety standards) and legal requirements of that particular country. Please do not export or operate this machine outside the country of its intended use until such compliance has been confirmed. Please contact your Hitachi dealer in case of questions about compliance.